



Spare Parts Catalogue

ZF 25 A
ZF 25

JUNE 2008
cod. **310.01.0090**

Plus d'informations sur : www.dbmoteurs.fr



TABLE OF CONTENTS

| | |
|---|----|
| 1. SPARE PARTS LIST | 3 |
| PREFACE..... | 3 |
| NAME PLATE | 3 |
| Fig. 1 ZF 25 A. | 4 |
| Fig. 1 ZF 25 | 6 |
| Fig. 2 ZF 25 A. | 8 |
| Fig. 2 ZF 25 | 10 |
| Fig. 3 Mechanical selector valve..... | 12 |
| Fig. 4 Old electric selector valve with proportional valves..... | 14 |
| Fig. 5 Old electric selector valve with proportional valves..... | 16 |
| Fig. 6 Old electric selector valve on/off 12V, 26 bar .. | 18 |
| Fig. 7 New electric selector valve on/off 12V and 24V - 26 bar | 20 |
| Fig. 8 New electric selector valve on/off 12V and 24V - 26 bar with trolling valve | 22 |
| Kit components | 24 |



1. SPARE PARTS LIST

Preface

The spare parts list is only valid for the type and versions of transmission, as shown below.

You will find the transmission type and version on your transmission name plate.

If the type and version indicated differs from that printed in this Manual, the relative Spare Parts List should be ordered from ZF MARINE ARCO S.p.A..

The indicated dimensions and standards are as such not enough for ordering parts.

When ordering parts, please state:

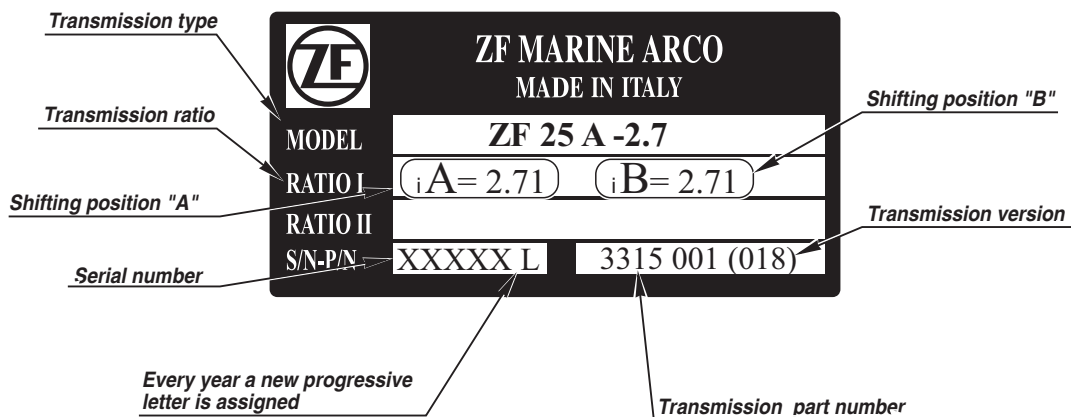
- Transmission type
- Serial number
- Item no.
- Part name
- Identification no.
- quantity of parts required.

The spare parts list is referring to the following versions:

| | |
|----------------|--|
| ZF 25 A | versions 01 (1.55 R); 02 (1.93 R); 03 (2.29 R); 04 (2.71 R); versions 001 (1.55 R); 002 (1.93 R); 003 (2.29 R); 004 (2.71 R); versions 014 (1.55 R); 015 (1.93 R); 016 (2.29 R); 017 (2.48 R); 018 (2.71 R); |
| ZF 25 | versions 001 (1.97 R); 002 (2.80 R); versions 003 (1.97 R); 004 (2.80 R); versions 010 (1.97 R); 011 (2.80 R); |

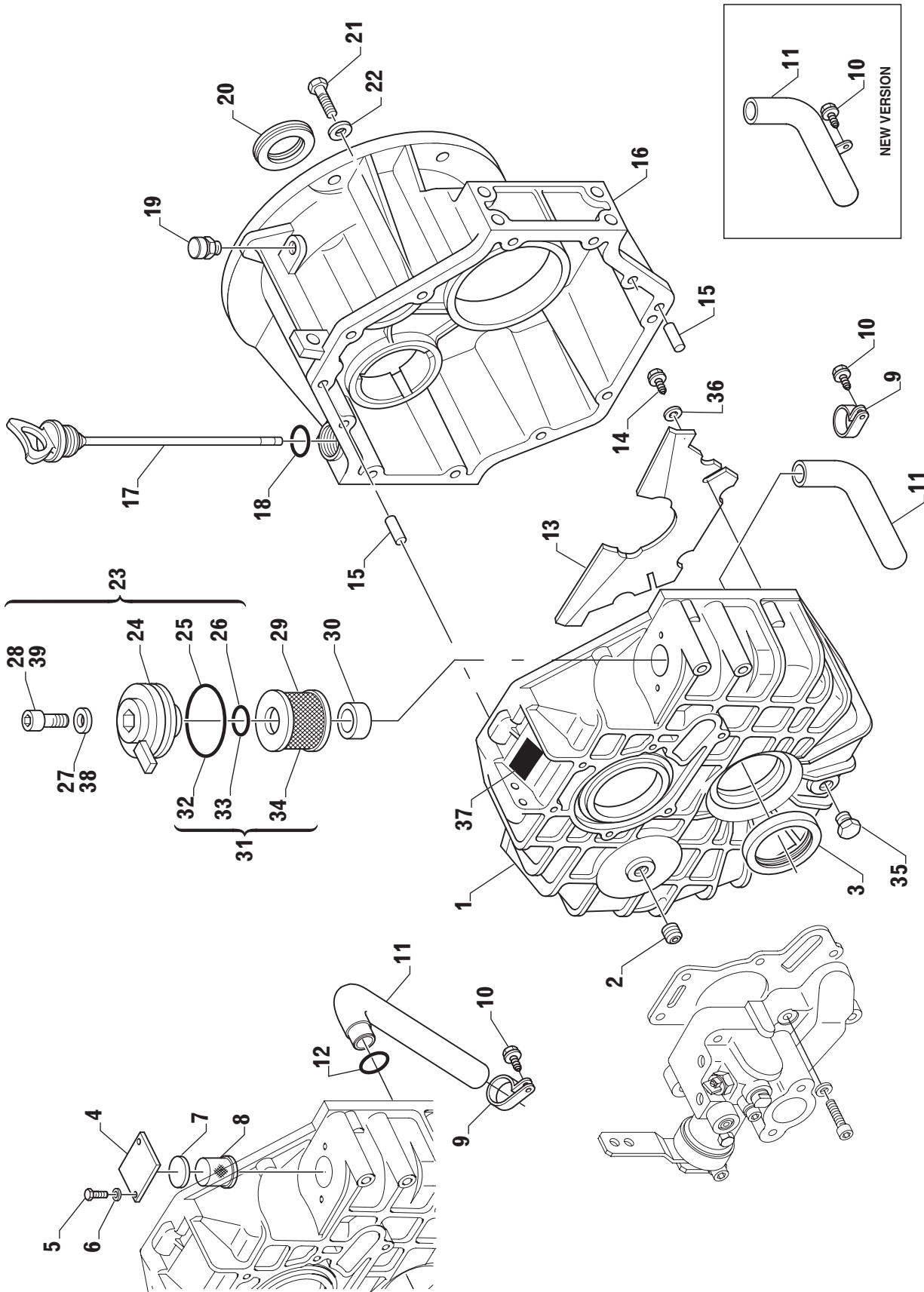
Name plate

The name plate is mounted to the transmission





ZF 25 A



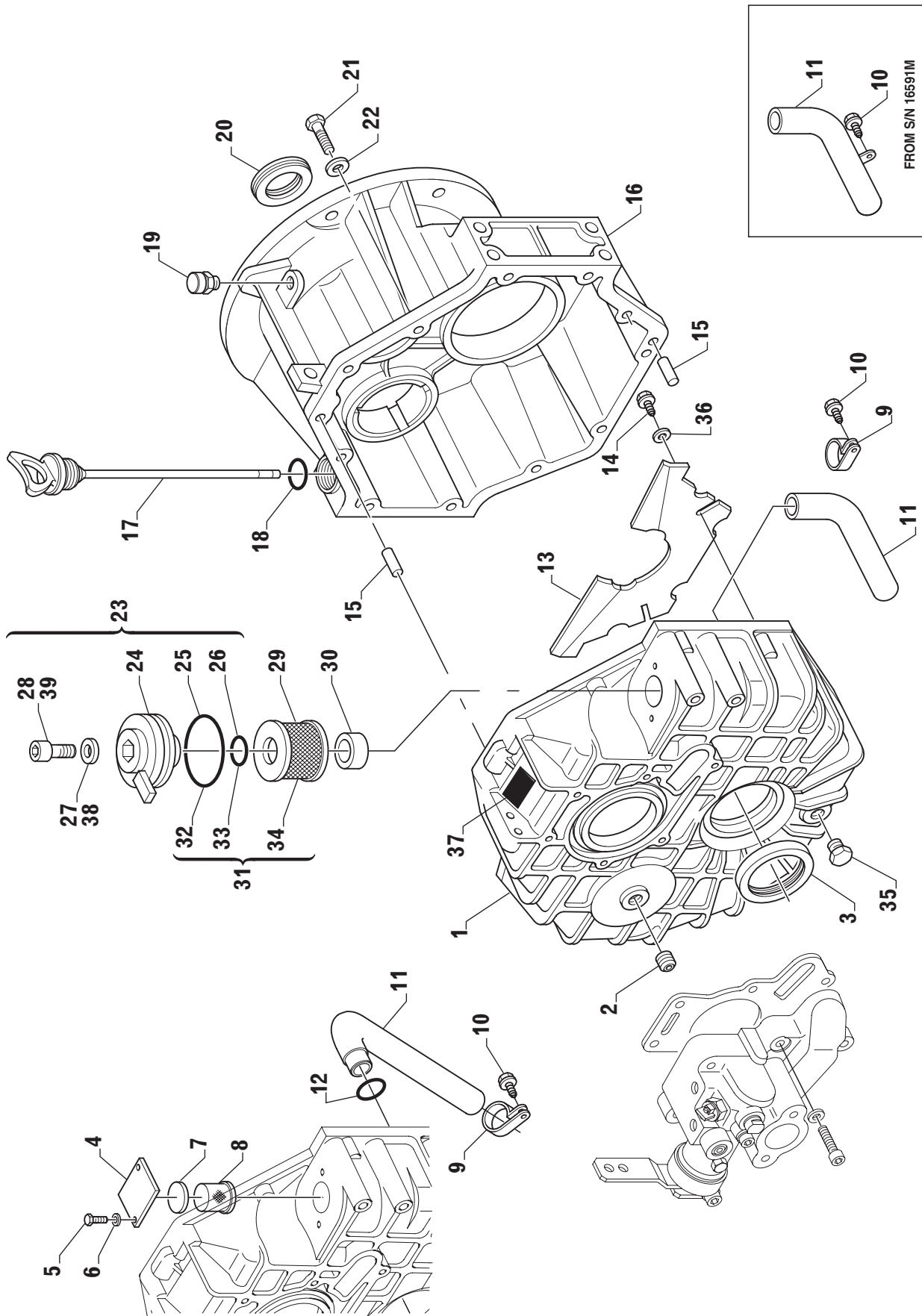


| Pos. | Part number | Old P/N | Descrizione | Description | Q.tà Q.ty | Note |
|------|--------------|---------|--|--|--------------|---------------------------------------|
| 1 | 3315 301 002 | 501134 | Scatola | Housing | 1 | Not available any more |
| | 3315 301 008 | | Scatola | Housing | 1 | From s/n 19395 L |
| 2 | 0636 301 041 | 442373 | Tappo | Plug | 1 | |
| 3 | 0634 319 135 | 374056 | Paraolio uscita | Output shaft seal | 1 | |
| 4 | 3310 301 001 | 501069 | Coperchio filtro | Filter cover | 1 | |
| 5 | 0636 015 257 | 330796 | Vite | Screw | 2 | |
| 6 | 0630 302 090 | 442372 | Rosetta | Washer | 2 | |
| 7 | 3315 301 014 | 501238 | Guarnizione | Gasket | 1 | |
| 8 | 3315 201 001 | 501401 | Filtro olio | Oil filter | 1 | |
| 9 | 0632 311 398 | 479439 | Fascetta | Suction pipe clamp | 1 | |
| 10 | 0636 101 411 | 102879 | Vite T.E. (fascetta tubo aspirazione) | Hex head screw (suction pipe clamp) | 1 | |
| 11 | 3315 301 013 | 501128 | Tubo | Pipe | 1 | |
| | 3315 301 010 | | Tubo aspirazione | Suction pipe | 1 | From s/n 19395 L |
| | 3315 301 023 | | Tubo aspirazione con supporto | Suction pipe with support | 1 | |
| 12 | 0634 306 209 | 501179 | Guarnizione OR | O-Ring | 1 | |
| 13 | 3315 301 012 | 501131 | Separatore | Baffle plate | 1 | |
| 14 | 0636 113 006 | 455079 | Vite T.E. | Hex head screw | 2 | |
| | 0636 015 020 | | Vite T.E. M5x12 | Hex head screw M5x12 | 2 | From s/n 16656 M |
| 15 | 0631 315 520 | 335817 | Spina | Locator pin | 2 | |
| 16 | 3315 301 006 | | Coperchio | Cover (housing) | 1 | |
| 17 | 3311 201 001 | 500994 | Asta livello olio + OR | Oil dipstick + OR | 1 | |
| 18 | 0634 304 405 | 501211 | . Guarnizione OR (Asta livello olio) | . O-Ring (Oil dipstick) | 1 | |
| 19 | 3311 301 002 | 442369 | Valvola di sfiato | Breather valve | 1 | |
| 20 | 3312 301 030 | 442371 | Paraolio entrata | Input shaft seal | 1 | |
| 21 | 0636 015 227 | 442375 | Vite T.E. | Hex head screw | 10 | |
| 22 | 0630 302 091 | 442371 | Rosetta | Washer | 10 | |
| 23 | 3312 101 003 | 500484 | Coperchio filtro completo | Filter cover, assy. | 1 | From s/n 19395 L |
| 24 | | | . Coperchio | . Cover (housing) | 1 | |
| 25 | 0634 304 688 | 442731 | . Guarnizione OR | . O-Ring | 1 | |
| 26 | 0634 306 204 | 105542 | . Guarnizione OR | . O-Ring | 1 | |
| 27 | 0630 001 085 | 167010 | . Rosetta | . Washer | 1 | |
| 28 | 0636 101 475 | 320202 | . Vite T.E. M8x30 | . Hex head screw M8x30 | 1 | |
| 29 | 3312 301 007 | 438637 | Filtro olio | Oil filter | 1 | From s/n 19395 L * old part number |
| 30 | 3312 301 008 | 439653 | Guarnizione | Gasket | 1 | From s/n 19395 L |
| 31 | 3312 199 031 | 463772 | Filtro olio completo | Oil filter, assy | 1 | From s/n 19395 L |
| 32 | 0634 304 688 | 442731 | . Guarnizione OR | . O-Ring | 1 | |
| 33 | 0634 306 204 | 105542 | . Guarnizione OR | . O-Ring | 1 | |
| 34 | 3312 301 037 | | . Filtro olio | . Oil filter | 1 | * new part number |
| 35 | 3312 301 017 | 469691 | Tappo | Plug | 1 | From s/n 19395 L |
| 36 | 0630 001 046 | | Rosetta | Washer | 2 | From s/n 16656 M |
| 37 | 3312 301 001 | | Targhetta di identificazione | Name plate | 1 | |
| 38 | 0630 001 085 | 167010 | Rosetta | Washer | 1 | |
| 39 | 0636 101 475 | 320202 | Vite T.E. M8x30 | Hex head screw M8x30 | 1 | |

* Fourni solamente incluso nel Kit filtro olio p/n 3312 199 031
Supplied only included in the oil filter Kit p/n 3312 199 031



ZF 25



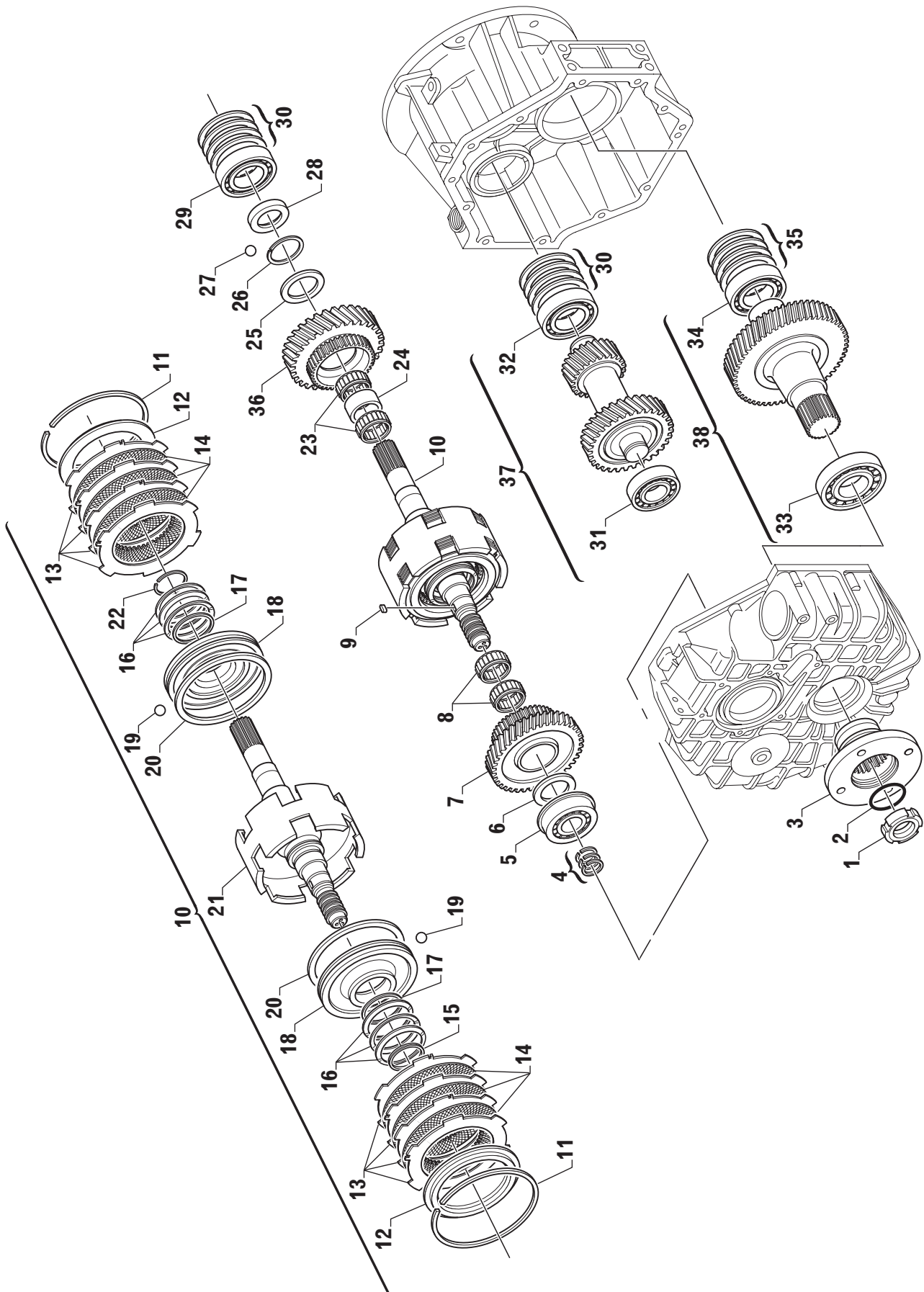


| Pos. | Part number | Old P/N | Descrizione | Description | Q.tà Q.ty | Note |
|------|--------------|---------|--|--|--------------|---------------------------------------|
| 1 | 3315 301 004 | | Scatola | Housing | 1 | Not available any more |
| | 3315 301 009 | | Scatola | Housing | 1 | From s/n 17437 L |
| 2 | 0636 301 041 | 442373 | Tappo | Plug | 1 | |
| 3 | 0634 319 135 | 374056 | Paraolio uscita | Output shaft seal | 1 | |
| 4 | 3310 301 001 | 501069 | Coperchio filtro | Filter cover | 1 | |
| 5 | 0636 015 257 | 330796 | Vite | Screw | 2 | |
| 6 | 0630 302 090 | 442372 | Rosetta | Washer | 2 | |
| 7 | 3315 301 014 | 501238 | Guarnizione | Gasket | 1 | |
| 8 | 3315 201 001 | 501401 | Filtro olio | Oil filter | 1 | |
| 9 | 0632 311 398 | 479439 | Fascetta | Suction pipe clamp | 1 | |
| 10 | 0636 101 411 | 102879 | Vite T.E. (fascetta tubo aspirazione) | Hex head screw (suction pipe clamp) | 1 | |
| 11 | 3315 301 013 | 501128 | Tubo | Pipe | 1 | |
| | 3315 301 011 | | Tubo aspirazione | Suction pipe | 1 | From s/n 17437 L |
| | 3315 301 022 | | Tubo aspirazione con supporto | Suction pipe with support | 1 | From s/n 16591 M |
| 12 | 0634 306 209 | 501179 | Guarnizione OR | O-Ring | 1 | |
| 13 | 3315 301 012 | 501131 | Separatore | Baffle plate | 1 | |
| 14 | 0636 113 006 | 455079 | Vite T.E. | Hex head screw | 2 | |
| | 0636 015 020 | | Vite T.E. | Hex head screw | 2 | From s/n 16591 M |
| 15 | 0631 315 520 | 335817 | Spina | Locator pin | 2 | |
| 16 | 3315 301 003 | | Coperchio | Cover (housing) | 1 | |
| 17 | 3311 201 001 | 500994 | Asta livello olio + OR | Oil dipstick + OR | 1 | |
| 18 | 0634 304 405 | 501211 | . Guarnizione OR (Asta livello olio) | . O-Ring (Oil dipstick) | 1 | |
| 19 | 3311 301 002 | 442369 | Valvola di sfiato | Breather valve | 1 | |
| 20 | 3312 301 030 | 442371 | Paraolio entrata | Input shaft seal | 1 | |
| 21 | 0636 015 227 | 442375 | Vite T.E. | Hex head screw | 10 | |
| 22 | 0630 302 091 | 442371 | Rosetta | Washer | 10 | |
| 23 | 3312 101 003 | 500484 | Coperchio filtro completo | Filter cover, assy. | 1 | From s/n 17437 L |
| 24 | | | . Coperchio | . Cover (housing) | 1 | |
| 25 | 0634 304 688 | 442731 | . Guarnizione OR | . O-Ring | 1 | |
| 26 | 0634 306 204 | 105542 | . Guarnizione OR | . O-Ring | 1 | |
| 27 | 0630 001 085 | 167010 | . Rosetta | . Washer | 1 | |
| 28 | 0636 101 475 | 320202 | . Vite T.E. M8x30 | . Hex head screw M8x30 | 1 | |
| 29 | 3312 301 007 | 438637 | Filtro olio | Oil filter | 1 | From s/n 17437 L * old part number |
| 30 | 3312 301 008 | 439653 | Guarnizione | Gasket | 1 | From s/n 17437 L |
| 31 | 3312 199 031 | 463772 | Filtro olio completo | Oil filter, assy | 1 | From s/n 17437 L |
| 32 | 0634 304 688 | 442731 | . Guarnizione OR | . O-Ring | 1 | |
| 33 | 0634 306 204 | 105542 | . Guarnizione OR | . O-Ring | 1 | |
| 34 | 3312 301 037 | | . Filtro olio | . Oil filter | 1 | * new part number |
| 35 | 3312 301 017 | 469691 | Tappo | Plug | 1 | From s/n 17437 L |
| 36 | 0630 001 046 | | Rosetta | Washer | 2 | From s/n 16591 M |
| 37 | 3312 301 001 | | Targhetta di identificazione | Name plate | 1 | |
| 38 | 0630 001 085 | 167010 | Rosetta | Washer | 1 | |
| 39 | 0636 101 475 | 320202 | Vite T.E. M8x30 | Hex head screw M8x30 | 1 | |

* Fornito solamente incluso nel Kit filtro olio p/n 3312 199 031
Supplied only included in the oil filter Kit p/n 3312 199 031



ZF 25 A



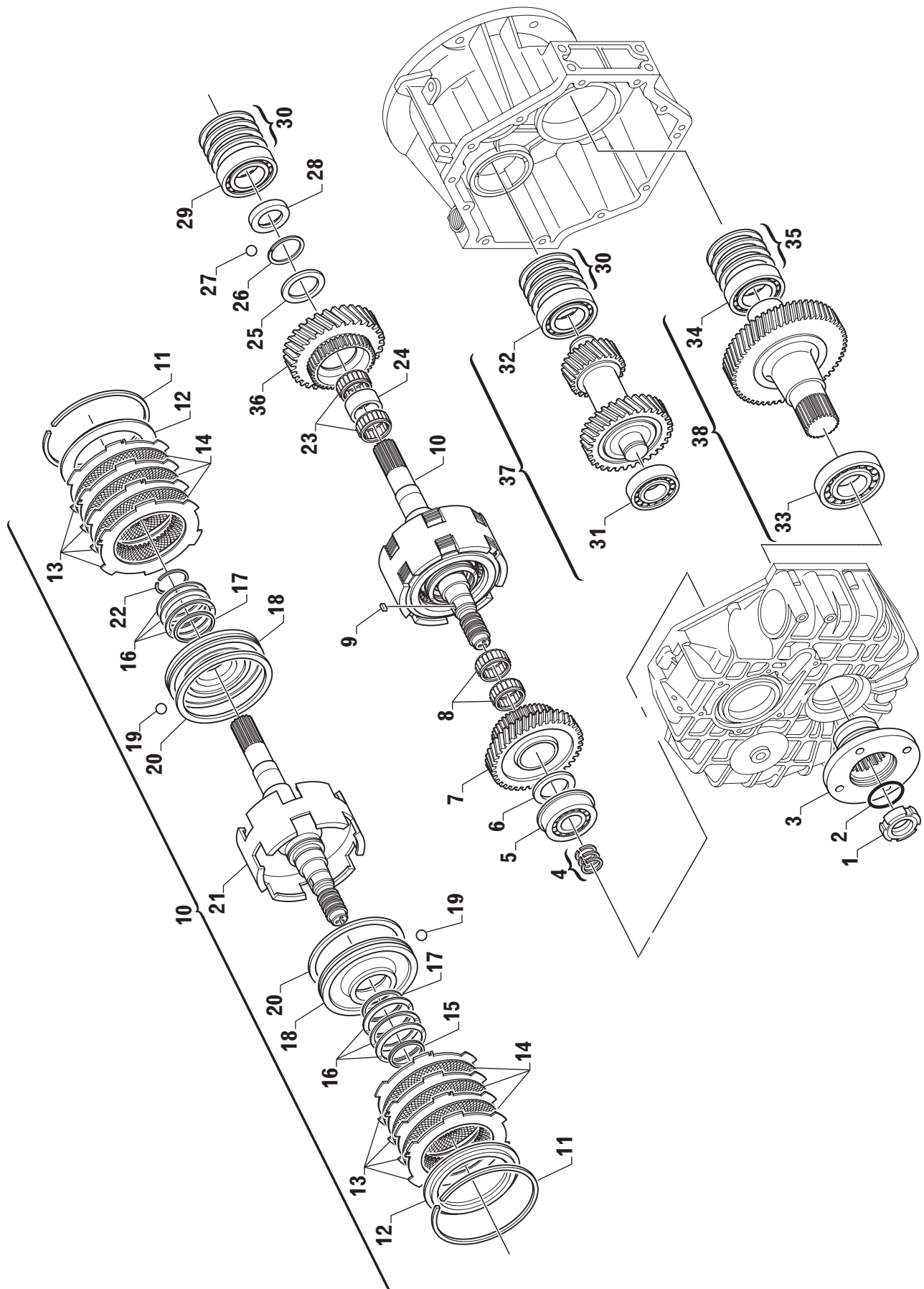


| Pos. | Part number | Old P/N | Descrizione | Description | Q.tà Q.ty | Note |
|---|--------------|---------|---|--|--------------|--------------------|
| 1 | 0637 513 037 | 489305 | Ghiera | Ring nut | 1 | |
| 2 | 0634 303 314 | 105559 | Guarnizione OR | O-Ring | 1 | |
| 3 | 3311 304 003 | 489109 | Flangia | Flange | 1 | |
| 4 | 3312 302 041 | 447038 | Anello di tenuta | Piston ring | 3 | |
| 5 | 0635 370 049 | | Cuscinetto a rulli conici | Tapered roller bearing | 1 | |
| 6 | 3312 302 004 | 454406 | Rasamento | Butting ring | 1 | |
| 7 | 3315 202 003 | | Ingranaggio Z3 = 35 | Reverse gear Z3 = 35 | 1 | |
| 8 | 3312 302 040 | 441438 | Cuscinetto a rullini | Needle bearing | 2 | |
| 9 | 0631 501 062 | 437956 | Chiavetta | Key | 1 | |
| 10 | 3315 199 021 | | Albero di ingresso completo | Input shaft, assy. | 1 | |
| 11 | 0630 513 163 | 393124 | . Anello elastico | . Snap ring | 2 | |
| 12 | 3311 302 004 | 489118 | . Disco finale | . End disc | 2 | |
| 13 | 3311 302 006 | 489119 | . Disco frizione esterno | . Outer clutch disc | 8 | |
| 14 | 3311 302 005 | 489120 | . Disco frizione interno | . Inner clutch disc | 6 | |
| 15 | 3311 302 008 | 489122 | . Anello di ritegno | . Retainer ring | 1 | |
| 16 | 3311 302 007 | 489121 | . Molla a tazza | . Cup spring | 6 | |
| 17 | 0634 402 539 | 489149 | . Anello interno | . Inner clutch piston ring | 2 | |
| 18 | 3311 302 003 | 490285 | . Pistone | . Clutch piston | 2 | Available ex-stock |
| | 3311 302 037 | | . Pistone | . Clutch piston | 2 | From s/n 19395 L |
| 19 | 0635 460 004 | 500036 | . Sfera | . Ball | 2 | |
| 20 | 0634 402 179 | 489006 | . Anello esterno | . Outer clutch piston ring | 2 | |
| 21 | 3315 199 020 | | . Albero di ingresso + cilindro frizione | . Input shaft and clutch housing | 1 | |
| 22 | 0630 501 031 | 500468 | . Anello di ritegno (lato ingresso) | . Retainer ring (spline side) | 1 | |
| 23 | 3315 302 016 | 500470 | Cuscinetto a rullini | Needle bearing | 2 | |
| 24 | 3311 302 010 | 500409 | Distanziale | Spacer | 1 | |
| 25 | 3311 302 009 | 500406 | Rasamento | Butting ring | 1 | |
| 26 | 0630 513 018 | 501177 | Anello elastico | Snap ring | 1 | |
| 27 | 0635 460 006 | 106690 | Sfera | Ball | 1 | |
| 28 | 3315 302 004 | 501130 | Distanziale | Spacer | 1 | |
| 29 | 0635 370 049 | | Cuscinetto a rulli conici | Tapered roller bearing | 1 | |
| 30 | 3311 302 011 | 489333 | Spessore 0,1 mm | Shim 0.1 mm | 2 | |
| | 3311 302 012 | 489334 | Spessore 0,15 mm | Shim 0.15 mm | 2 | |
| | 3311 302 013 | 489335 | Spessore 0,3 mm | Shim 0.3 mm | 2 | |
| | 3311 302 014 | 489336 | Spessore 0,5 mm | Shim 0.5 mm | 2 | |
| 31 | 0635 370 049 | | Cuscinetto a rulli conici | Tapered roller bearing | 1 | |
| 32 | 0635 370 049 | | Cuscinetto a rulli conici | Tapered roller bearing | 1 | |
| 33 | 0635 370 049 | | Cuscinetto a rulli conici | Tapered roller bearing | 1 | |
| 34 | 0635 375 010 | 501178 | Cuscinetto a rulli conici | Tapered roller bearing | 1 | |
| 35 | 0630 000 091 | 501195 | Spessore 0,1 mm | Shim 0.1 mm | 2 | |
| | 0630 000 058 | 501196 | Spessore 0,15 mm | Shim 0.15 mm | 2 | |
| | 0630 000 059 | 501197 | Spessore 0,3 mm | Shim 0.3 mm | 2 | |
| | 0630 000 061 | 501198 | Spessore 0,5 mm | Shim 0.5 mm | 2 | |
| Vers. 01,001,014 (Rapporto I = 1,55) | | | | Vers. 01,001,014 (Ratio I = 1.55) | | |
| 36 | 3315 202 004 | 501138 | Ingranaggio Z1 = 31 | Forward gear Z1 = 31 | 1 | |
| 37 | 3315 199 012 | 501628 | Albero intermedio Z4 = 35, Z5 = 31 | Intermediate shaft Z4 = 35, Z5 = 31 | 1 | * |
| 38 | 3315 199 013 | 501624 | Albero di uscita Z2 = 48 | Output shaft Z2 = 48 | 1 | * |
| Vers. 02,002,015 (Rapporto I = 1,93) | | | | Vers. 02,002,015 (Ratio I = 1.93) | | |
| 36 | 3315 202 008 | 501297 | Ingranaggio Z1 = 27 | Forward gear Z1 = 27 | 1 | |
| 37 | 3315 199 014 | 501629 | Albero intermedio Z4 = 35, Z5 = 27 | Intermediate shaft Z4 = 35, Z5 = 27 | 1 | * |
| 38 | 3315 199 015 | 501625 | Albero di uscita Z2 = 52 | Output shaft Z2 = 52 | 1 | * |
| Vers. 03,003,016 (Rapporto I = 2,29) | | | | Vers. 03,003,016 (Ratio I = 2.29) | | |
| 36 | 3315 202 006 | 501140 | Ingranaggio Z1 = 24 | Forward gear Z1 = 24 | 1 | |
| 37 | 3315 199 016 | 501630 | Albero intermedio Z4 = 35, Z5 = 24 | Intermediate shaft Z4 = 35, Z5 = 24 | 1 | * |
| 38 | 3315 199 017 | 501626 | Albero di uscita Z2 = 55 | Output shaft Z2 = 55 | 1 | * |
| Vers. 017 (Rapporto I = 2,48) | | | | Vers. 017 (Ratio I = 2.48) | | |
| 36 | 3315 202 009 | | Ingranaggio Z1 = 25 | Forward gear Z1 = 25 | 1 | |
| 37 | 3315 199 023 | | Albero intermedio Z4 = 35, Z5 = 25 | Intermediate shaft Z4 = 35, Z5 = 25 | 1 | * |
| 38 | 3315 199 024 | | Albero di uscita Z2 = 62 | Output shaft Z2 = 62 | 1 | * |
| Vers. 04,004,018 (Rapporto I = 2,71) | | | | Vers. 04,004,018 (Ratio I = 2.71) | | |
| 36 | 3315 202 007 | 501141 | Ingranaggio Z = 21 | Forward gear Z = 21 | 1 | |
| 37 | 3315 199 018 | 501631 | Albero intermedio Z4 = 35, Z5 = 21 | Intermediate shaft Z4 = 35, Z5 = 21 | 1 | * |
| 38 | 3315 199 019 | 501627 | Albero di uscita Z2 = 57 | Output shaft Z2 = 57 | 1 | * |

* Cuscinetti a rulli conici già assemblati - *Tapered roller bearings already assembled*



ZF 25

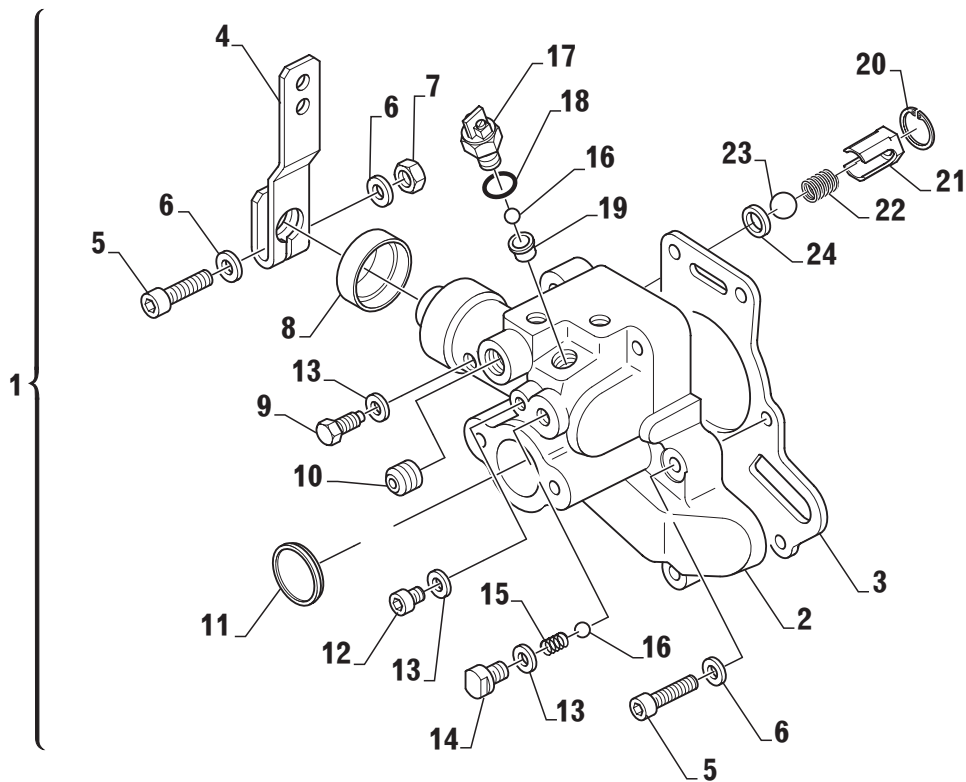




| Pos. | Part number | Old P/N | Descrizione | Description | Q.tà Q.ty | Note |
|--|--------------|---------|---|---|--------------|--------------------|
| 1 | 0637 513 037 | 489305 | Ghiera | Ring nut | 1 | |
| 2 | 0634 303 314 | 105559 | Guarnizione OR | O-Ring | 1 | |
| 3 | 3315 304 006 | | Flangia | Flange | 1 | |
| 4 | 3312 302 041 | 447038 | Anello di tenuta | Piston ring | 3 | |
| 5 | 0635 370 049 | | Cuscinetto a rulli conici | Tapered roller bearing | 1 | |
| 6 | 3312 302 004 | 454406 | Rasamento | Butting ring | 1 | |
| 7 | 3315 202 003 | | Ingranaggio Z3 = 35 | Reverse gear Z3 = 35 | 1 | |
| 8 | 3312 302 040 | 441438 | Cuscinetto a rullini | Needle bearing | 2 | |
| 9 | 0631 501 062 | 437956 | Chiavetta | Key | 1 | |
| 10 | 3315 199 021 | | Albero di ingresso completo | Input shaft, assy. | 1 | |
| 11 | 0630 513 163 | 393124 | . Anello elastico | . Snap ring | 2 | |
| 12 | 3311 302 004 | 489118 | . Disco finale | . End disc | 2 | |
| 13 | 3311 302 006 | 489119 | . Disco frizione esterno | . Outer clutch disc | 8 | |
| 14 | 3311 302 005 | 489120 | . Disco frizione interno | . Inner clutch disc | 6 | |
| 15 | 3311 302 008 | 489122 | . Anello di ritegno | . Retainer ring | 1 | |
| 16 | 3311 302 007 | 489121 | . Molla a tazza | . Cup spring | 6 | |
| 17 | 0634 402 539 | 489149 | . Anello interno | . Inner clutch piston ring | 2 | |
| 18 | 3311 302 003 | 490285 | . Pistone | . Clutch piston | 2 | Available ex-stock |
| | 3311 302 037 | | . Pistone | . Clutch piston | 2 | From s/n 17437 L |
| 19 | 0635 460 004 | 500036 | . Sfera | . Ball | 2 | |
| 20 | 0634 402 179 | 489006 | . Anello esterno | . Outer clutch piston ring | 2 | |
| 21 | 3315 199 020 | | . Albero di ingresso + cilindro frizione | . Input shaft and clutch housing | 1 | |
| 22 | 0630 501 031 | 500468 | . Anello di ritegno (lato ingresso) | . Retainer ring (spline side) | 1 | |
| 23 | 3315 302 016 | 500470 | Cuscinetto a rullini | Needle bearing | 2 | |
| 24 | 3311 302 010 | 500409 | Distanziale | Spacer | 1 | |
| 25 | 3311 302 009 | 500406 | Rasamento | Butting ring | 1 | |
| 26 | 0630 513 018 | 501177 | Anello elastico | Snap ring | 1 | |
| 27 | 0635 460 006 | 106690 | Sfera | Ball | 1 | |
| 28 | 3315 302 004 | 501130 | Distanziale | Spacer | 1 | |
| 29 | 0635 370 049 | | Cuscinetto a rulli conici | Tapered roller bearing | 1 | |
| 30 | 3311 302 011 | 489333 | Spessore 0,1 mm | Shim 0.1 mm | 2 | |
| | 3311 302 012 | 489334 | Spessore 0,15 mm | Shim 0.15 mm | 2 | |
| | 3311 302 013 | 489335 | Spessore 0,3 mm | Shim 0.3 mm | 2 | |
| | 3311 302 014 | 489336 | Spessore 0,5 mm | Shim 0.5 mm | 2 | |
| 31 | 0635 370 049 | | Cuscinetto a rulli conici | Tapered roller bearing | 1 | |
| 32 | 0635 370 049 | | Cuscinetto a rulli conici | Tapered roller bearing | 1 | |
| 33 | 0635 370 049 | | Cuscinetto a rulli conici | Tapered roller bearing | 1 | |
| 34 | 0635 375 010 | 501178 | Cuscinetto a rulli conici | Tapered roller bearing | 1 | |
| 35 | 0630 000 091 | 501195 | Spessore 0,1 mm | Shim 0.1 mm | 2 | |
| | 0630 000 058 | 501196 | Spessore 0,15 mm | Shim 0.15 mm | 2 | |
| | 0630 000 059 | 501197 | Spessore 0,3 mm | Shim 0.3 mm | 2 | |
| | 0630 000 061 | 501198 | Spessore 0,5 mm | Shim 0.5 mm | 2 | |
| Vers. 001,003,010 (Rapporto I = 1,97) | | | | Vers. 001,003,010 (Ratio I = 1.97) | | |
| 36 | 3315 202 001 | | Ingranaggio Z1 = 32 | Forward gear Z1 = 32 | 1 | |
| 37 | 3315 203 001 | | Albero intermedio Z4 = 35, Z5 = 32 | Intermediate shaft Z4 = 35, Z5 = 32 | 1 | * |
| 38 | 3315 204 001 | | Albero di uscita Z2 = 63 | Output shaft Z2 = 63 | 1 | * |
| Vers. 002,004,011 (Rapporto I = 2,8) | | | | Vers. 002,004,011 (Ratio I = 2.8) | | |
| 36 | 3315 202 002 | | Ingranaggio Z1 = 25 | Forward gear Z1 = 25 | 1 | |
| 37 | 3315 203 002 | | Albero intermedio Z4 = 35, Z5 = 25 | Intermediate shaft Z4 = 35, Z5 = 25 | 1 | * |
| 38 | 3315 204 002 | | Albero di uscita Z2 = 70 | Output shaft Z2 = 70 | 1 | * |

* Cuscinetti a rulli conici già assemblati - *Tapered roller bearings already assembled*

MECHANICAL SELECTOR VALVE



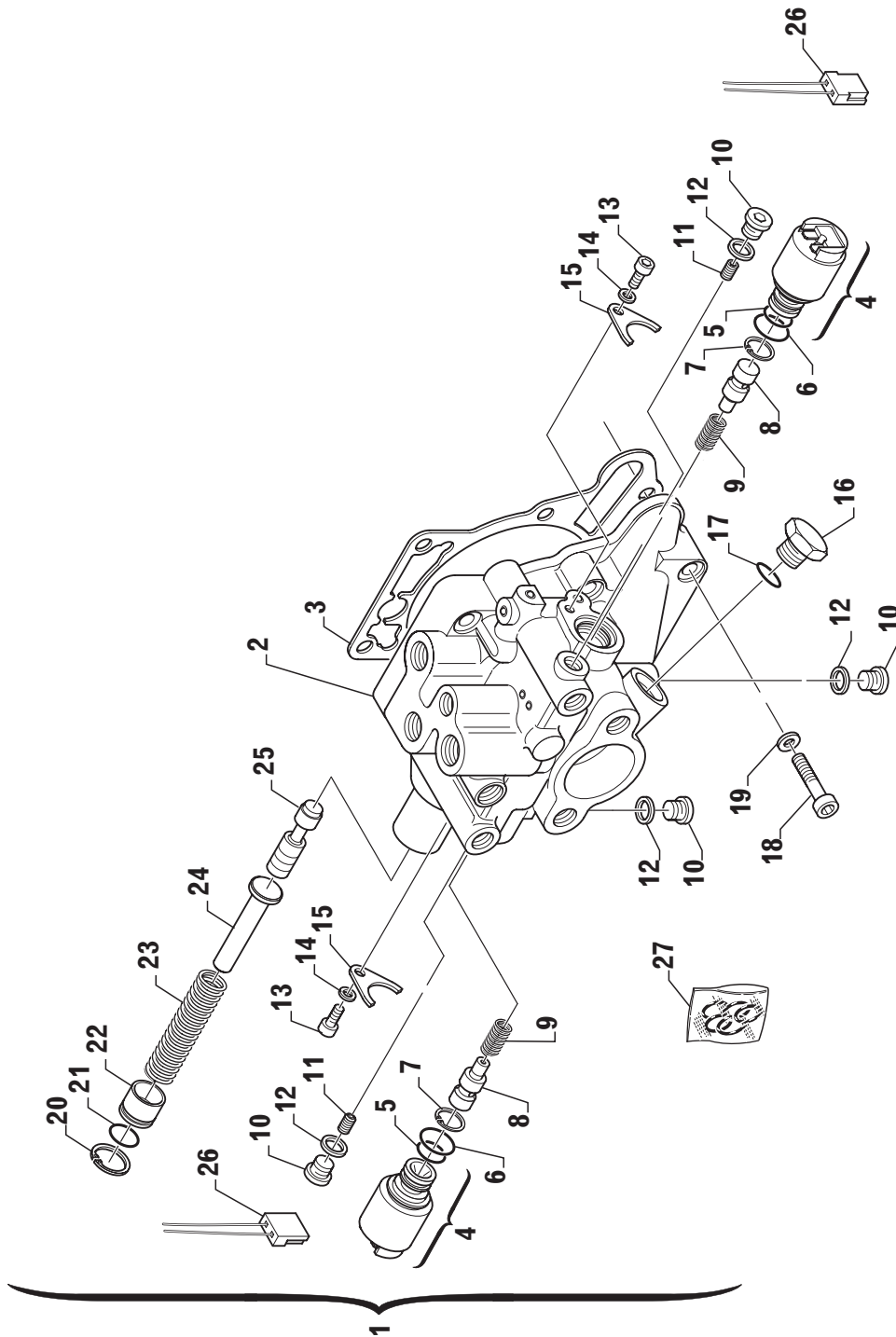


| Pos. | Part number | Old P/N | Descrizione | Description | Q.tà Q.ty | Note |
|------|--------------|---------|--|---|--------------|------|
| 1 | 3315 108 001 | | Blocco comando (23 bar - foro Ø 1,8 mm) | Mechanical selector valve (23 bar - hole Ø 1.8 mm) | 1 | |
| ● | 3312 108 001 | | Blocco comando (23 bar) | Mechanical selector valve (23 bar) | 1 | |
| ◆ | 3315 108 006 | | Blocco comando (26 bar - foro Ø 1,8 mm) | Mechanical selector valve (26 bar - hole Ø 1.8 mm) | 1 | |
| 2 | ☆ | | . Valvola di comando | . Control valve | 1 | |
| 3 | 3312 308 020 | 408388 | . Guarnizione | . Gasket | 1 | |
| 4 | 3312 308 025 | 452963 | . Leva | . Lever | 1 | |
| 5 | 0636 101 727 | 442377 | . Vite | . Screw | 7 | |
| 6 | 0630 302 090 | 442372 | . Rosetta | . Washer | 8 | |
| 7 | 0637 006 157 | 455785 | . Dado | . Nut | 1 | |
| 8 | 0634 309 621 | 500065 | . Guarnizione | . Gasket | 1 | |
| 9 | 3312 308 034 | 500026 | . Vite di fermo | . Stop screw | 1 | |
| 10 | 0636 309 007 | 455756 | . Tappo | . Plug | 1 | |
| 11 | 0631 405 061 | 500107 | . Tappo | . Plug | 1 | |
| 12 | 0636 302 053 | 103465 | . Tappo | . Plug | 1 | |
| 13 | 0634 801 302 | 107410 | . Rosetta | . Washer | 3 | |
| 14 | 3312 308 037 | 500028 | . Vite di guida | . Guide bolt | 1 | |
| 15 | 3312 308 047 | 500044 | . Molla | . Spring | 1 | |
| 16 | 0635 460 014 | 106695 | . Sfera | . Ball | 2 | |
| 17 | 3312 308 029 | 455764 | . Interruttore completo | . Neutral safety switch assy. | 1 | |
| 18 | 0634 306 518 | 500834 | . Guarnizione OR | . O-Ring | 1 | |
| 19 | 3312 308 039 | 500030 | . Boccia | . Bushing | 1 | |
| 20 | 0630 502 005 | 500083 | . Anello elastico | . Snap ring | 1 | |
| 21 | 3312 308 038 | 500029 | . Boccia | . Bushing | 1 | |
| 22 | 3312 308 042 | 500032 | . Molla per lubrificazione | . Spring | 1 | |
| 23 | 0635 460 023 | 500097 | . Sfera | . Ball | 1 | |
| 24 | 3312 308 036 | 500027 | . Distanziale | . Spacer | 1 | |

● Models: ZF 25 A - ZF 25 (for **FENWICK** Customer only)

◆ Models: ZF 25 A - ZF 25 (for **NANNI** Customer only)

OLD ELECTRIC SELECTOR VALVE WITH PROPORTIONAL VALVES





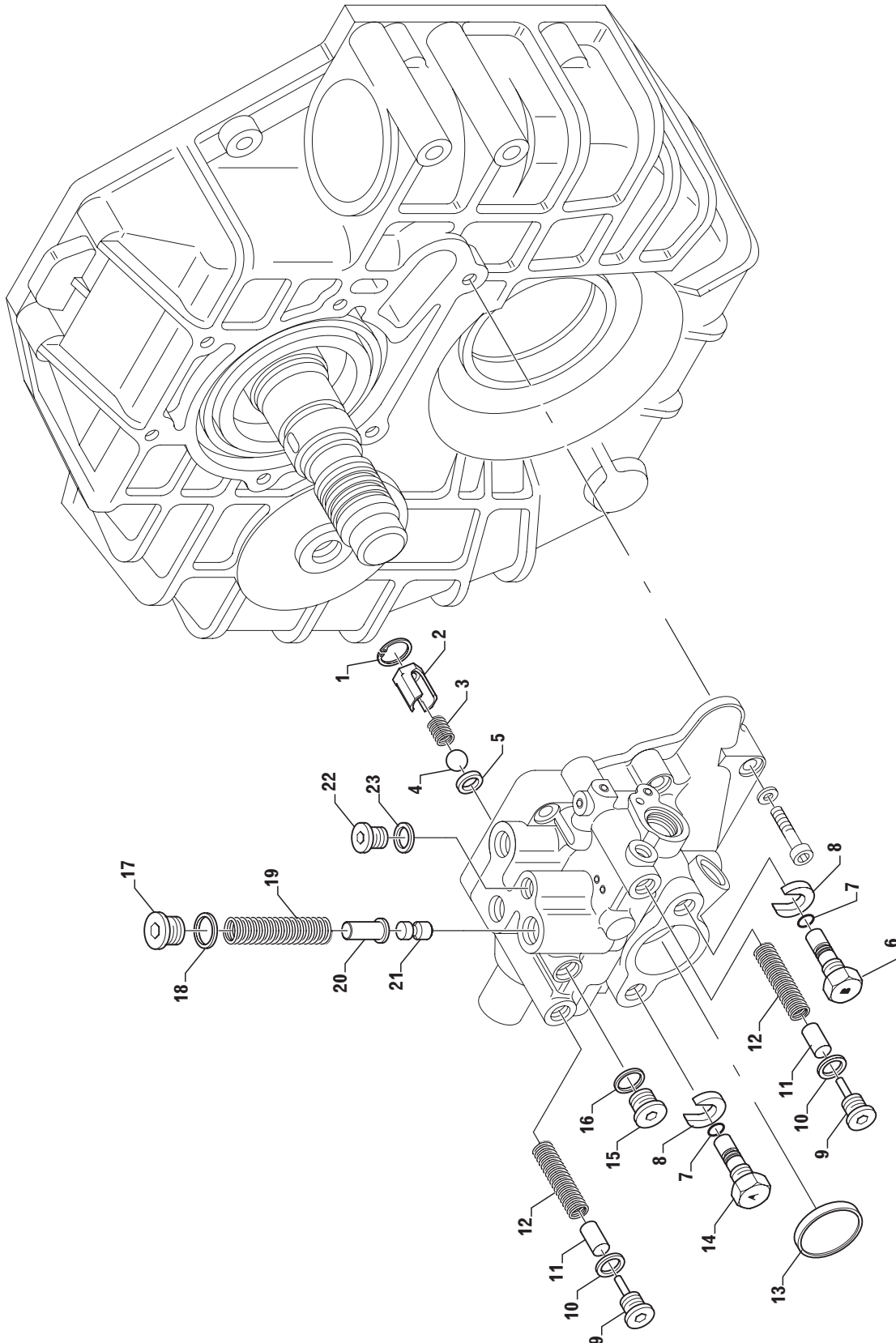
| Pos. | Part number | Old P/N | Descrizione | Description | Q.tà Q.ty | Note |
|------|---------------|---------|------------------------------|-------------------------|--------------|------------|
| 1 | 3312 308 048 | 501493 | Corpo distributore elettrico | Hydraulic valve housing | 1 | |
| | 3312 199 004 | | Distributore elettrico | Electric selector valve | 1 | (1) |
| | 3312 199 005 | | Distributore elettrico | Electric selector valve | 1 | (2) |
| 2 | | | . Valvola di comando | . Control valve | 1 | |
| 3 | 3312 308 020 | 408388 | Guarnizione | Gasket | 1 | |
| 4 | 3312 308 064 | 501634 | Valvola proporzionale 12 V | Electric valve 12 V | 2 | |
| | 3312 308 065 | 501635 | Valvola proporzionale 24 V | Electric valve 24 V | 2 | |
| 5 | 0634 304 651 | | Guarnizione OR | O-Ring | 2 | |
| 6 | 0634 304 391 | 501524 | Anello di tenuta | Piston ring | 2 | |
| 7 | 0630 502 078 | 501528 | Anello elastico | Snap ring | 2 | |
| 8 | 3312 308 054 | 501502 | Pistoncino valvola 2/3 vie | Valve piston | 2 | |
| 9 | 3312 308 062 | 501533 | Molla per pistone | Piston spring | 2 | |
| 10 | 0636 302 053 | 103465 | Tappo | Plug | 4 | Ma = 12 Nm |
| 11 | 3312 308 059 | 501516 | Grano | Drilled plug | 2 | Ma = 8 Nm |
| 12 | 0634 801 302 | 107410 | Rosetta | Washer | 4 | |
| 13 | 0636 101 651 | 501525 | Vite | Screw | 2 | Ma = 8 Nm |
| 14 | 0630 001 096 | 501527 | Rondella | Washer | 2 | |
| 15 | 1043 326 045 | | Fermo valvola | Valve lock | 2 | |
| 16 | 3312 308 063 | 501562 | Tappo | Plug | 1 | Ma = 20 Nm |
| 17 | 0634 306 524 | | Anello OR | O-Ring | 1 | |
| 18 | 0636 101 727 | 442377 | Vite | Screw | 6 | |
| 19 | 0630 302 090 | 442372 | Rosetta | Washer | 6 | |
| 20 | 0630 532 004 | 501529 | Anello elastico | Snap ring | 1 | |
| 21 | 0634 304 309 | 501523 | Anello di tenuta OR | O-Ring | 1 | |
| 22 | 3312 308 058 | 501515 | Tappo | Plug | 1 | |
| 23 | 3312 308 040 | 500031 | Molla | Spring | 1 | |
| 24 | 3312 308 043 | 500038 | Perno guida molla | Spring guide pin | 1 | |
| 25 | 3312 308 017 | | Pistoncino estraibile | Valve piston | 1 | |
| 26 | 3312 117 001 | | Kit connettori | Connectors kit | 1 | |
| 27 | 978.28.641.01 | 501751 | Kit guarnizioni | Seal kit | 1 | |

(1) Installare con 12 V - to be instelled with 12 V power supply

(2) Installare con 24 V - to be instelled with 24 V power supply



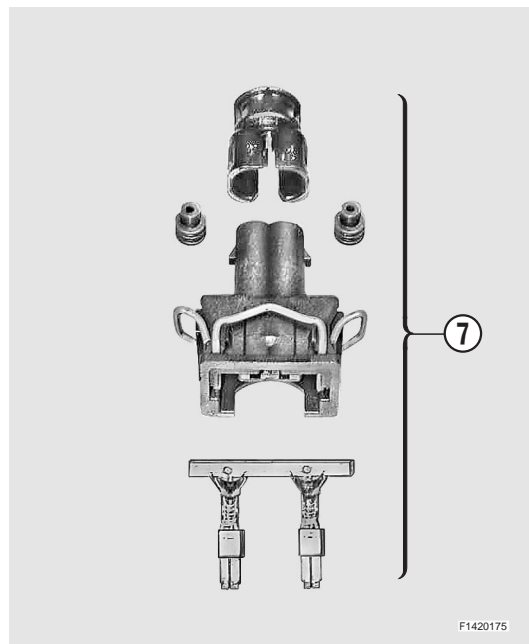
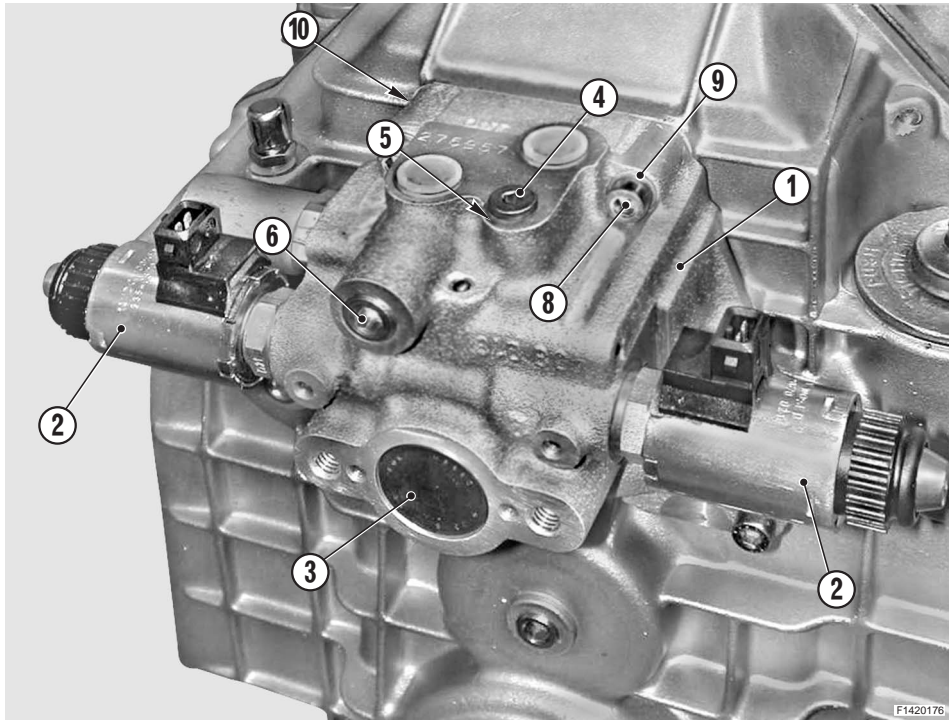
OLD ELECTRIC SELECTOR VALVE WITH PROPORTIONAL VALVES





| Pos. | Part number | Old P/N | Descrizione | Description | Q.tà Q.ty | Note |
|------|--------------|---------|------------------------------|---------------------|--------------|------------|
| 1 | 0630 502 005 | 500083 | Anello elastico | Snap ring | 1 | |
| 2 | 3312 308 038 | 500029 | Boccola | Bushing | 1 | |
| 3 | 3312 308 042 | 500032 | Molla per lubrificazione | Spring | 1 | |
| 4 | 0635 460 023 | 500097 | Sfera | Ball | 1 | |
| 5 | 3312 308 036 | 500027 | Distanziale | Spacer | 1 | |
| 6 | 3312 308 052 | 501497 | Vite torna a casa "B" | Come home screw "B" | 1 | Ma = 12 Nm |
| 7 | 0634 304 690 | 501522 | Anello di tenuta OR | O-Ring | 2 | |
| 8 | 3312 308 050 | 501495 | Rondella | Washer | 2 | |
| 9 | 3312 308 056 | 501513 | Vite | Screw | 2 | Ma = 12 Nm |
| 10 | 0634 801 298 | 500095 | Rosetta | Washer | 2 | |
| 11 | 4656 306 013 | | Pistoncino ammortizzatore | Piston | 2 | |
| 12 | 0732 042 539 | | Molla ammortizzatore | Spring | 2 | |
| 13 | 0631 405 062 | 501530 | Tappo | Plug | 1 | |
| 14 | 3312 308 051 | 501496 | Vite torna a casa "A" | Come home screw "A" | 1 | Ma = 12 Nm |
| 15 | 0636 302 068 | 500744 | Tappo | Plug | 1 | Ma = 12 Nm |
| 16 | 0634 801 260 | 500897 | Rosetta | Washer | 1 | |
| 17 | 0636 302 065 | 501520 | Vite | Screw | 1 | Ma = 20 Nm |
| 18 | 0634 801 281 | 227851 | Rosetta | Washer | 1 | |
| 19 | 3312 308 061 | 501532 | Molla | Spring | 1 | |
| 20 | 3312 308 057 | 501514 | Perno guida molla | Spring guide pin | 1 | |
| 21 | 3312 308 053 | 501498 | Pistoncino valvola riduzione | Valve piston | 1 | |
| 22 | 0636 302 053 | | Tappo | Plug | 1 | |
| 23 | 0634 801 302 | 107410 | Rosetta | Washer | 1 | |

OLD ELECTRIC SELECTOR VALVE ON/OFF 12V - 26 bar

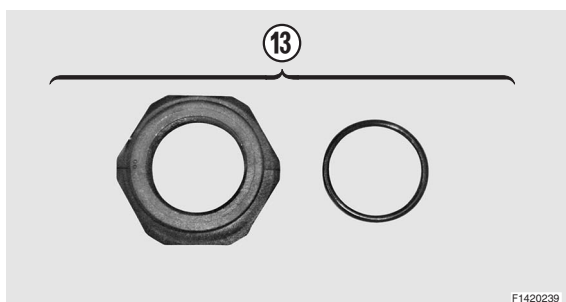
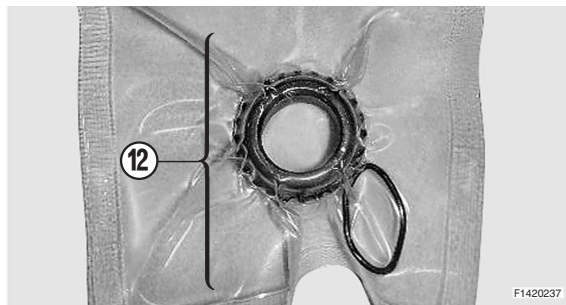
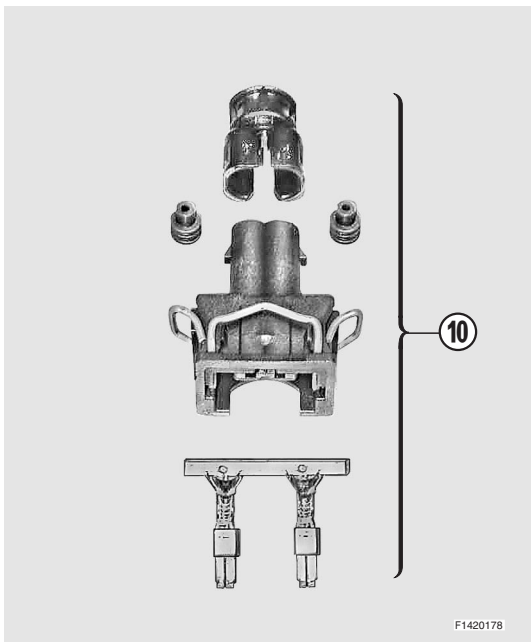
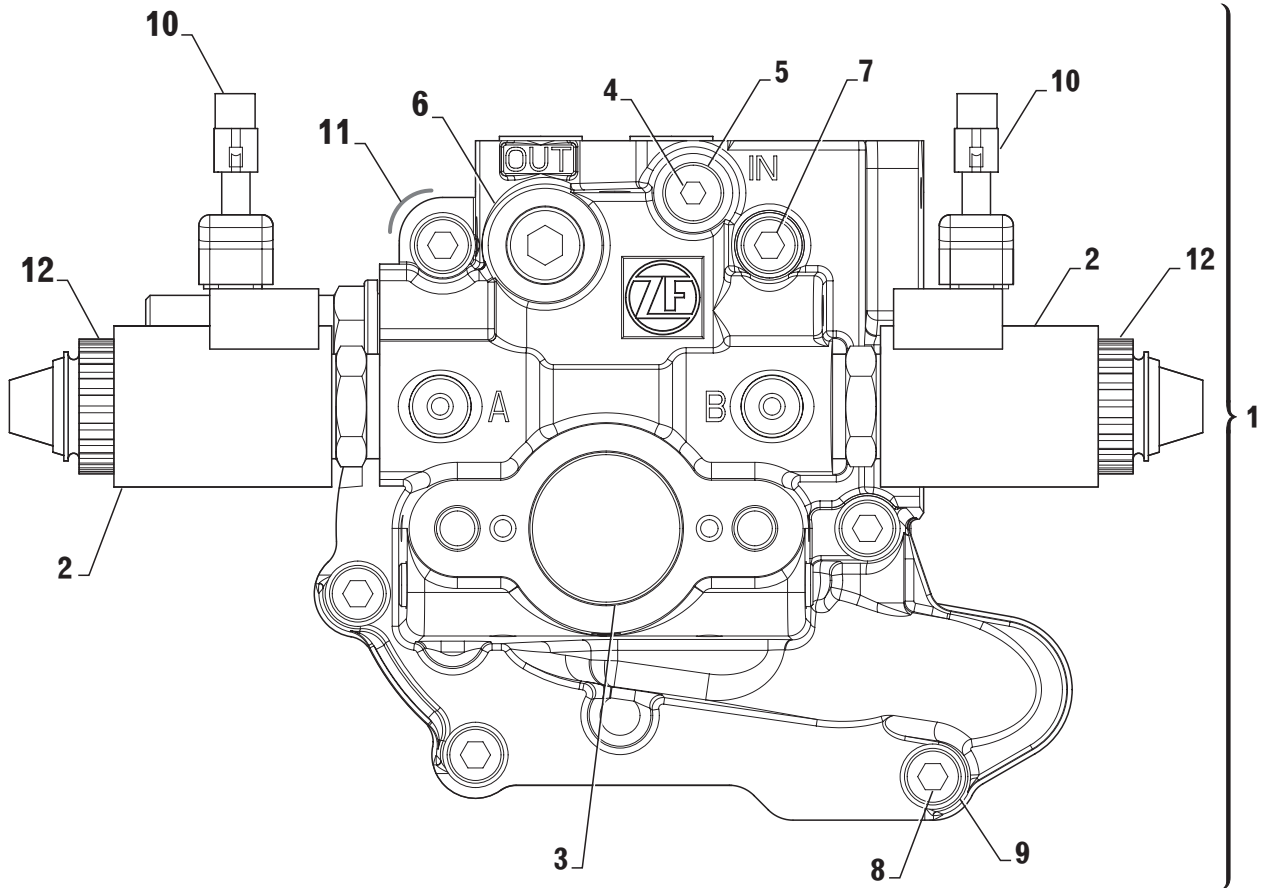




| Pos. | Part number | Old P/N | Descrizione | Description | Q.tà Q.ty | Note |
|------|--------------|---------|---|--|--------------|------------|
| 1 | 3312 199 015 | | Distributore elettrico 26 bar ON/OFF | Electric selector valve 26 bar ON/OFF | 1 | * |
| 2 | 3312 308 173 | | Elettrovalvola ON/OFF 12V | Solenoid valve ON/OFF 12V | 2 | |
| 3 | 0631 405 061 | | Tappo | Dummy plug | 1 | |
| 4 | 0636 302 053 | | Tappo M10x1 | Screw plug M10x1 | 1 | Ma = 12 Nm |
| 5 | 0634 801 302 | | Rosetta | Washer | 1 | |
| 6 | 0636 309 007 | | Tappo | Screw plug | 1 | Ma = 30 Nm |
| 7 | 3316 117 001 | | Assieme connettore | Connector kit | 2 | |
| 8 | 0636 101 727 | | Vite T.E. M8x40 | Cap screw M8x40 | 6 | |
| 9 | 0630 302 090 | | Rosetta | Spring washer | 6 | |
| 10 | 3312 308 020 | | Guarnizione | Gasket | 1 | |

* Installare con 12 V - *To be installed with 12 V power supply*

NEW ELECTRIC SELECTOR VALVE ON/OFF 12V - 26 BAR
NEW ELECTRIC SELECTOR VALVE ON/OFF 24V - 26 BAR





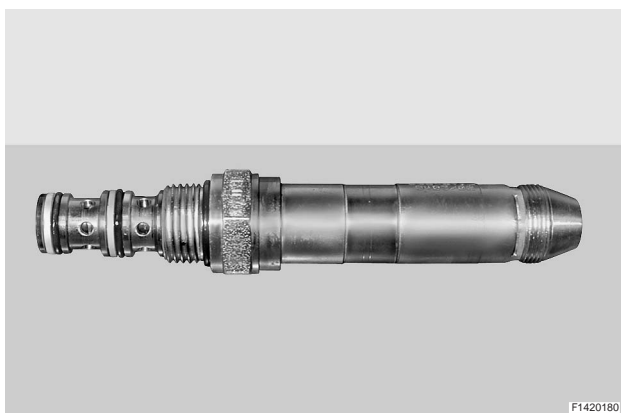
| Pos. | Part number | Old P/N | Descrizione | Description | Q.tà Q.ty | Note |
|------|--------------|---------|---|--|--------------|-------------------|
| 1 | 3312 199 063 | | Distributore elettrico ON/OFF 12V - 26 bar | Electric selector valve ON/OFF 12V - 26 bar | 1 | * |
| | 3312 199 064 | | Distributore elettrico ON/OFF 24V - 26 bar | Electric selector valve ON/OFF 24V - 26 bar | 1 | * * |
| 2 | 3312 308 069 | | Elettrovalvola ON/OFF 12V | Solenoid valve ON/OFF 12V | 2 | OLD |
| | 3312 308 106 | | Elettrovalvola ON/OFF 24V | Solenoid valve ON/OFF 24V | 2 | OLD |
| | 3312 308 173 | | Elettrovalvola ON/OFF 12V | Solenoid valve ON/OFF 12V | 2 | NEW Ma = 20 Nm |
| | 3312 308 174 | | Elettrovalvola ON/OFF 24V | Solenoid valve ON/OFF 24V | 2 | NEW Ma = 20 Nm |
| 3 | 0631 405 061 | | Tappo | Dummy plug | 1 | |
| 4 | 0636 302 053 | | Tappo M10x1 | Screw plug M10x1 | 1 | Ma = 12 Nm |
| 5 | 0634 801 302 | | Rosetta | Washer | 1 | |
| 6 | 0636 309 007 | | Tappo | Screw plug | 1 | Ma = 35 Nm |
| 7 | 0636 101 709 | | Vite T.E. M8x65 | Cap screw M8x65 | 2 | |
| 8 | 0636 101 727 | | Vite T.E. M8x40 | Cap screw M8x40 | 4 | |
| 9 | 0630 302 090 | | Rosetta elastica | Spring washer | 6 | |
| 10 | 3316 117 001 | | Assieme connettore | Connector kit | 2 | |
| 11 | 3312 308 020 | | Guarnizione | Gasket | 1 | |
| 12 | 3312 199 087 | | Ghiera + Guarnizione OR | End cap + O-Ring | 2 | OLD Ma = 3 Nm |
| 13 | 3312 199 088 | | Ghiera + Guarnizione OR | End cap + O-Ring | 2 | NEW Ma = 4 + 2 Nm |

* Installare con 12 V - *To be installed with 12 V power supply*

* * Installare con 24 V - *To be installed with 24 V power supply*



Per convertire la elettrovalvola da 12V a 24V sostituire solo il solenoide con il ricambio a cod. 3312 199 062.
To transform the solenoid valve from 12V to 24V it will be enough to replace only the solenoid - available loosen P/N 3312 199 062.

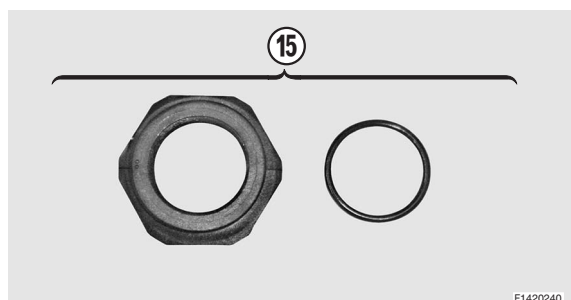
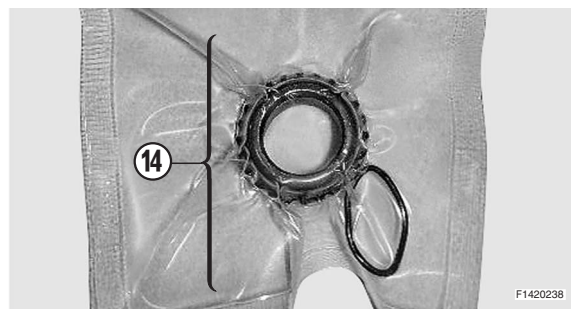
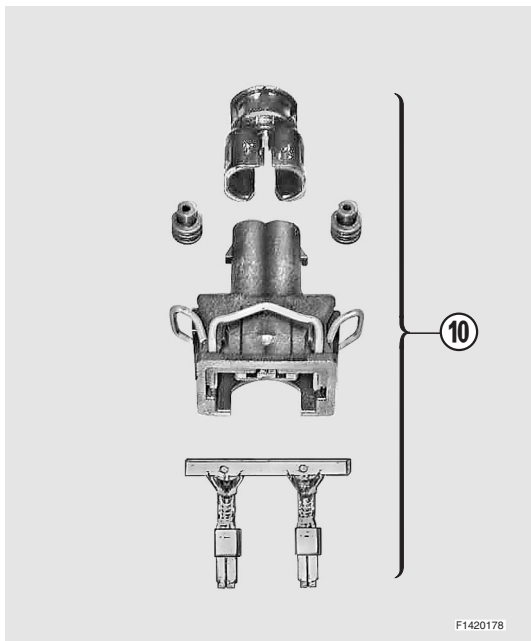
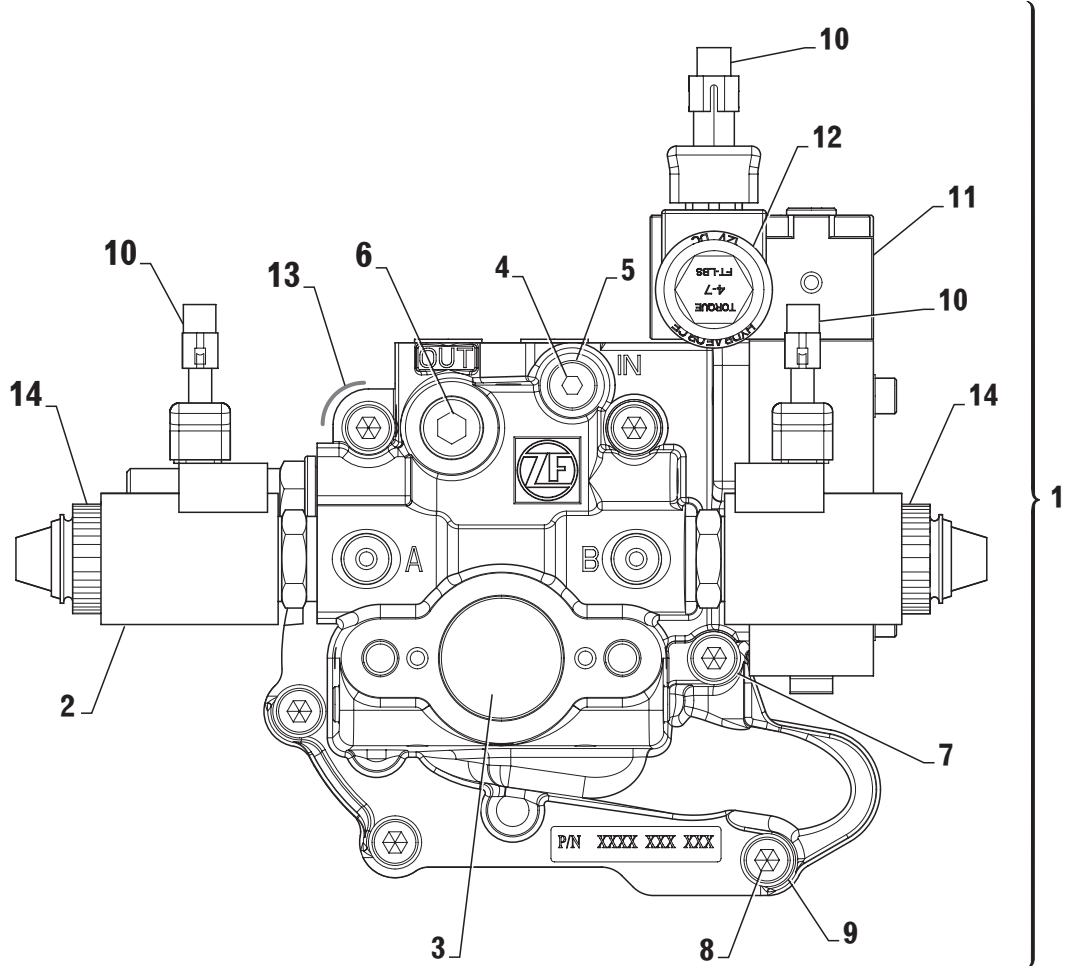


La valvola non è disponibile singolarmente ed è un componente comune alla versione 12V e 24V dell'elettrovalvola.
The valve is not available loosen and it is a common component both for 12V and 24V solenoid valve.



**NEW ELECTRIC SELECTOR VALVE ON/OFF 12V - 26 BAR
WITH TROLLING VALVE**

**NEW ELECTRIC SELECTOR VALVE ON/OFF 24V - 26 BAR
WITH TROLLING VALVE**





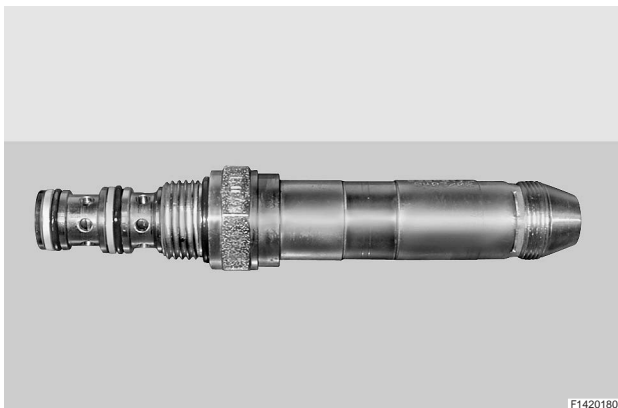
| Pos. | Part number | Old P/N | Descrizione | Description | Q.tà Q.ty | Note |
|------|--------------|---------|---|--|--------------|-------------------|
| 1 | 3312 199 065 | | Distributore elettrico ON/OFF 12V, 26 bar con TV | Electric selector valve ON/OFF 12V, 26 bar with Trolling valve | 1 | * |
| | 3312 199 066 | | Distributore elettrico ON/OFF 24V, 26 bar con TV | Electric selector valve ON/OFF 24V, 26 bar with Trolling valve | 1 | ** |
| 2 | 3312 308 069 | | Elettrovalvola ON/OFF 12V | Solenoid valve ON/OFF 12V | 2 | OLD |
| | 3312 308 106 | | Elettrovalvola ON/OFF 24V | Solenoid valve ON/OFF 24V | 2 | OLD |
| | 3312 308 173 | | Elettrovalvola ON/OFF 12V | Solenoid valve ON/OFF 12V | 2 | NEW Ma = 20 Nm |
| | 3312 308 174 | | Elettrovalvola ON/OFF 24V | Solenoid valve ON/OFF 24V | 2 | NEW Ma = 20 Nm |
| 3 | 0631 405 061 | | Tappo | Dummy plug | 1 | |
| 4 | 0636 302 053 | | Tappo a vite M10x1 | Screw plug M10x1 | 1 | Ma = 12 Nm |
| 5 | 0634 801 302 | | Anello di tenuta | Sealing ring | 1 | |
| 6 | 0636 309 007 | | Tappo a vite | Screw plug | 1 | Ma = 35 Nm |
| 7 | 0636 101 709 | | Vite TCEI M8x65 | Cap screw M8x65 | 2 | |
| 8 | 0636 101 727 | | Vite TCEI M8x40 | Cap screw M8x40 | 4 | |
| 9 | 0630 302 090 | | Rosetta elastica | Spring washer | 6 | |
| 10 | 3316 117 001 | | Assieme connettore | Connector kit | 3 | |
| 11 | 3312 108 027 | | Trolling valve | Trolling device | 1 | |
| 12 | 3312 308 096 | | Valvola proporzionale 12V | Proportional valve 12V | 1 | Ma = 27 Nm |
| | 3312 308 124 | | Valvola proporzionale 24V | Proportional valve 24V | 1 | Ma = 27 Nm |
| 13 | 3312 308 020 | | Guarnizione | Gasket | 1 | |
| 14 | 3312 199 087 | | Ghiera + Guarnizione OR | End cap + O-Ring | 2 | OLD Ma = 3 Nm |
| 15 | 3312 199 088 | | Ghiera + Guarnizione OR | End cap + O-Ring | 2 | NEW Ma = 4 + 2 Nm |

* Installare con 12 V - *To be installed with 12 V power supply*

** Installare con 24 V - *To be installed with 24 V power supply*



Per convertire la elettrovalvola da 12V a 24V sostituire solo il solenoide con il ricambio a cod. 3312 199 062.
To transform the solenoid valve from 12V to 24V it will be enough to replace only the solenoid - available loosen P/N 3312 199 062.



La valvola non è disponibile singolarmente ed è un componente comune alla versione 12V e 24V dell'elettrovalvola.
The valve is not available loosen and it is a common component both for 12V and 24V solenoid valve.

**COMPOSIZIONE KIT - KIT COMPONENTS**

| Fig. | Pos. | Part number | Old P/N | Descrizione | Description | Q.ty |
|-------|-------------------|---------------------|---------|--|------------------------------------|------|
| - | - | 3315 199 002 | | Kit guarnizioni e anelli elastici | Seal kit & piston rings | 1 |
| 2 | 2 | 0634 303 314 | 105559 | . Anello OR | . O-ring | 1 |
| 1 | 20 | 3312 301 030 | 413883 | . Paraolio entrata | . Input shaft seal | 1 |
| 1 | 3 | 0634 319 135 | 374056 | . Paraolio uscita | . Output shaft seal | 1 |
| 3 | 3 | 3312 308 020 | 408388 | . Guarnizione | . Gasket | 1 |
| 1 | 18 | 0634 304 405 | 501211 | . Guarnizione OR | . O-Ring | 1 |
| 2 | 4 | 3312 302 041 | 447038 | . Anello elastico | . Piston ring | 3 |
| 3 | 8 | 0634 309 621 | 500065 | . Guarnizione | . Gasket | 1 |
| 1 | 30 | 3312 301 008 | 439653 | . Guarnizione | . Gasket | 1 |
| 1 | 25 | 0634 304 688 | 442731 | . Guarnizione OR | . O-Ring | 1 |
| 1 | 26 | 0634 306 204 | 105542 | . Guarnizione OR | . O-Ring | 1 |
| 1 | 7 | 3315 301 014 | 501238 | . Guarnizione | . Gasket | 1* |
| 1 | 12 | 0634 306 209 | 501179 | . Guarnizione OR | . O-Ring | 1* |
| <hr/> | | | | | | |
| - | - | 3315 199 003 | - | Kit guarnizioni e frizioni | Seal kit & clutch kit | 1 |
| - | - | 3315 199 002 | - | . Kit guarnizioni e anelli elastici | . Seal kit & piston rings | 1 |
| 2 | 14 | 3311 302 005 | 489120 | . Disco frizione interno | . Inner disc | 6 |
| 2 | 13 | 3311 302 006 | 489119 | . Disco frizione esterno | . Outer disc | 8 |
| 2 | 6 | 3312 302 004 | 454406 | . Rasamento | . Butting ring | 1 |
| 2 | 25 | 3311 302 009 | 500406 | . Rasamento | . Butting ring | 1 |
| 2 | 9 | 0631 501 062 | 437956 | . Chiavetta | . Key | 1 |
| 2 | 26 | 0630 513 018 | 501177 | . Anello elastico | . Snap ring | 1 |
| 2 | 27 | 0635 460 006 | 106690 | . Sfera | . Ball | 1 |
| 2 | 15 | 3311 302 008 | 489122 | . Anello di ritegno | . Retainer ring | 1 |
| 2 | 22 | 0630 501 031 | 500468 | . Anello di ritegno | . Retainer ring | 1 |
| <hr/> | | | | | | |
| - | - | 3315 199 004 | - | Kit cuscinetti | Bearing kit | 1 |
| 2 | 5, 29, 31, 32, 33 | 0635 370 049 | - | . Cuscinetto a rullini conici | . Tapered roller bearing | 5 |
| 2 | 34 | 0635 375 010 | 501178 | . Cuscinetto a rullini conici | . Tapered roller bearing | 1 |
| 2 | 8 | 3312 302 040 | 441438 | . Cuscinetto a rullini | . Needle bearing | 2 |
| 2 | 23 | 3315 302 016 | 500470 | . Cuscinetto a rullini | . Needle bearing | 2 |
| 2 | 30 | 3311 302 011 | 489333 | . Spessore 0,1 mm | . Shim 0.1 mm | 2 |
| 2 | 30 | 3311 302 012 | 489334 | . Spessore 0,15 mm | . Shim 0.15 mm | 2 |
| 2 | 30 | 3311 302 013 | 489335 | . Spessore 0,3 mm | . Shim 0.3 mm | 2 |
| 2 | 30 | 3311 302 014 | 489336 | . Spessore 0,5 mm | . Shim 0.5 mm | 2 |
| 2 | 35 | 0630 000 091 | 501195 | . Spessore 0,1 mm | . Shim 0.1 mm | 2 |
| 2 | 35 | 0630 000 058 | 501196 | . Spessore 0,15 mm | . Shim 0.15 mm | 2 |
| 2 | 35 | 0630 000 059 | 501197 | . Spessore 0,3 mm | . Shim 0.3 mm | 2 |
| 2 | 35 | 0630 000 061 | 501198 | . Spessore 0,5 mm | . Shim 0.5 mm | 2 |

* Only for old oil filter version
Solo per la vecchia versione del filtro olio