



# Spare Parts Catalogue

**ZF 12**

JULY 2008

cod. **310.01.0089**

Plus d'informations sur : [www.dbmoteurs.fr](http://www.dbmoteurs.fr)





## TABLE OF CONTENTS

<b>Spare parts list</b> .....	27
Explosion view ZF12 .....	28
Spare parts list .....	29
Seal kit and piston rings .....	30
Seal and clutch pack kit .....	30
Bearing kit .....	30
Oil cooler kit .....	31
Installation drawing .....	32
Oil cooler-installation drawing .....	33





## SPARE PARTS LIST

### Preface

The spare parts list is only valid for the type and versions of transmission, as shown below.

You will find the transmission type and version on your transmission name plate.

If the type and version indicated differs from that printed in this Manual, the relative Spare Parts List should be ordered from ZF MARINE ARCO S.p.A..

The indicated dimensions and standards are as such not enough for ordering parts.

When ordering parts, please state:

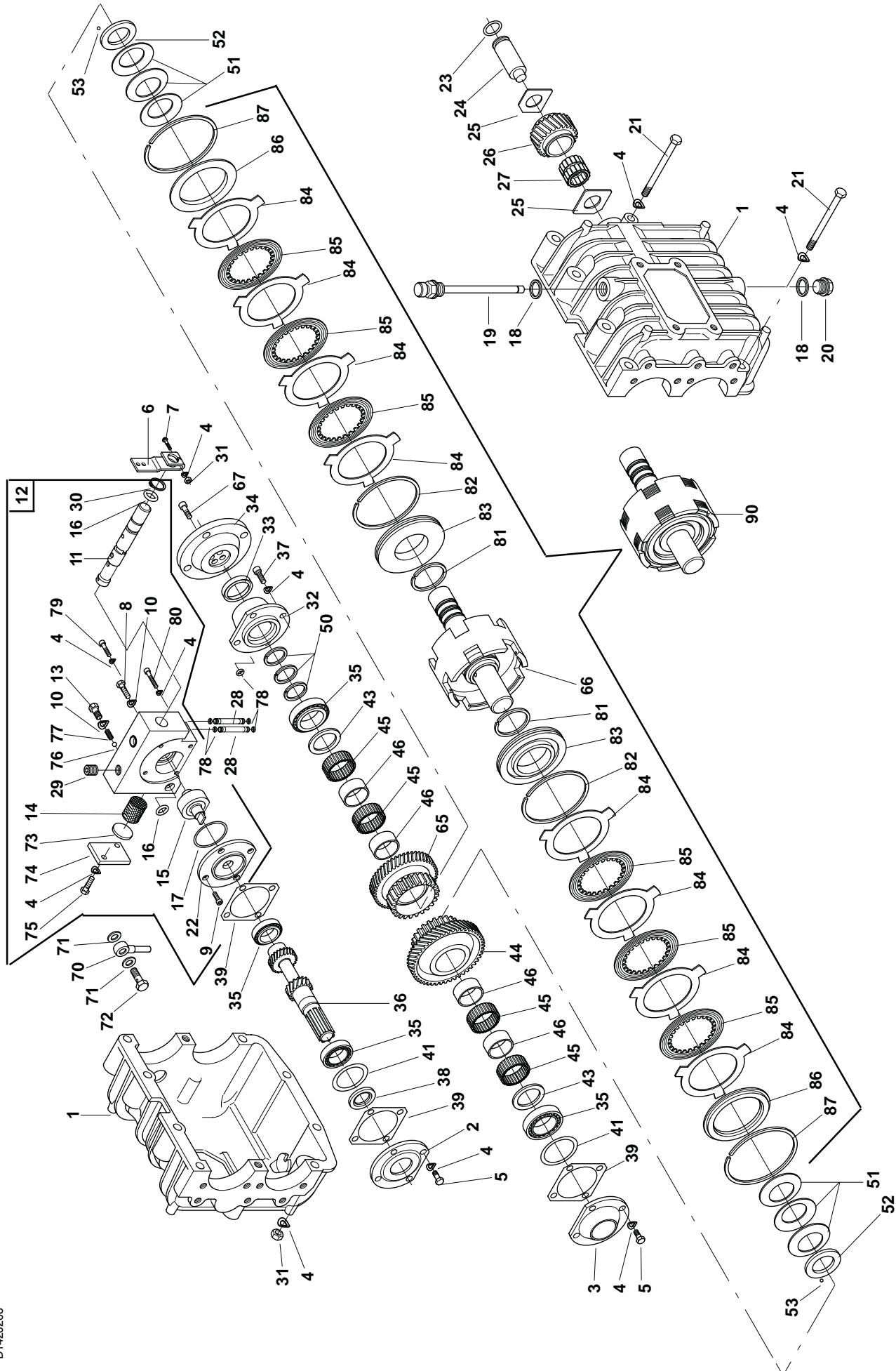
- transmission type
- serial number
- item no. part name, ident no. and quantity of parts required.

The spare parts list is referring to the following versions: ZF12 versions 001 (2.14 R); 002 (2.63 R).

### Name plated

The name plate is mounted to the transmission.

Transmission type	MODEL	ZF 12	i A = 2.63	Transmission ratio Shifting position "A"
Transmission serial number	SER.N.	XXXXX	K i B = 1.95	Transmission ratio Shifting position "B"
Transmission part number	P/N	3310 002 002		Production date: Every year a new progressive letter is assigned
				Transmission version





Ref. P / N	D / N	Q.ty	Description	Ref. P / N	D / N	Q.ty	Description		
01	3310 201 002	500999	1	Housing assembly	50	0634 402 174	501019	3	Piston ring
02	3306 301 010	206450	1	Cover	51	3311 302 007	489121	6	Cup spring
03	3310 301 003	501003	1	Cover	52	3310 304 004	501064	2	Thrust washer
04	0630 302 090	442372	35	Washer	53	0635 460 001	501076	2	Ball
05	0636 015 289	215870	8	Screw M8x16	65	3310 304 008	501062	1	Gear Z = 43
06	3312 308 025	452963	1	Shift lever	66	3310 199 001	501456	1	Output shaft and clutch housing assembly
07	0636 103 204	500113	1	Screw M8x40	67	3310 304 010	501016	4	Bolt-Pin
08	3312 308 034	500026	1	Stop bolt	70	3310 201 001	501005	1	Suction pipe
09	0636 102 102	501026	4	Pump cover bolt M5x16	71	0634 801 281	227851	2	Washer
10	0634 801 302	107410	2	Washer	72	3310 301 002	501017	1	Suction pipe bolt
11		501374	1	Spool valve	73	3311 301 011	500216	1	Seal
12	3310 208 001	501273	1	Control block	74	3310 301 001	501069	1	Filter cover
13	3310 308 008	501041	1	Drilled bolt	75	0636 015 257	330796	2	Bolt
14	3311 301 001	500149	1	Oil filter	76	0635 460 014	106695	1	Ball
15	3310 106 001	501377	1	Pump and shaft assembly	77	3312 308 047	500044	1	Spring
16	0634 303 118	105530	2	O-Ring	78	0634 306 517	501022	5	O-Ring
17	0634 306 262	501025	1	O-Ring	79	0636 101 176	501075	2	Bolt
18	3306 301 016	326578	2	Sealing ring	80	0636 101 602	501034	2	Bolt
19	3310 201 003	501296	1	Dipstick breather	81	0634 402 539	489149	2	Piston ring inner
20	3306 301 013	228566	1	Plug	82	0634 402 179	489006	2	Piston ring outer
21	0636 010 376	215869	10	Bolt	83	3310 304 003	501009	2	Piston
22	3310 308 002	501066	1	Pump cover	84	3311 302 006	489119	8	Clutch outer disc
23	0634 303 118	105530	1	O-Ring	85	3311 302 005	489120	6	Clutch inner disc
24	3306 303 002	206470	1	Intermediate shaft	86	3311 302 004	489118	2	End disc
25	3306 303 003	206473	2	Spacer	87	0630 513 163	393124	2	Snap ring
26	3306 303 001	254730	1	Intermediate gear Z = 25	90	3310 199 002	501376	1	Output shaft and complete clutch assembly
27	3306 303 007	215878	1	Needle bearing					
28	3310 308 010	500539	2	Pipe					
29	0636 309 007	455756	1	Plug					
30	0630 501 016	501028	1	Snap ring					
31	0637 006 157	455785	9	Nut					
32	3310 199 006	501375	1	Cover					
33	0634 301 829	501020	1	Output flange seal ring					
34	3310 304 009	501015	1	Output flange					
35	0635 501 597	501378	4	Tapered roller bearing					
36	3310 302 001	501048	1	Input shaft Z = 22/22 vers. 01 ratio 2					
36	3310 302 002	501050	1	Input shaft Z = 19/22 vers. 02 ratio 2,5					
37	0636 101 680	501023	4	Bolt					
38	0634 301 833	215875	1	Seal ring input					
39	3306 301 014	254715	3	Gasket					
41	3306 302 011	206474	2	Shim 0.10					
	3306 302 012	206475	2	Shim 0.15					
	3306 302 013	206476	2	Shim 0.20					
	3306 302 014	206477	2	Shim 0.30					
	3306 302 016	228539	2	Shim 1.00					
	3306 302 015	228540	2	Shim 0.50					
43	3310 304 005	501065	2	Thrust washer					
44	3310 304 006	501060	1	Gear Z = 47 vers. 01 ratio 2					
	3310 304 007	501061	1	Gear Z = 50 vers. 02 ratio 2,5					
45	0635 300 148	201187	4	Needle cage					
46	3306 304 021	251524	4	Inner race					

Pos. 11 and pos. 30 cannot be supplied as loose parts

**ZF 12 KIT COMPONENTS**

Pos.	Old P/N	New part number	Description	Q.ty
-	<b>501458</b>	<b>3310 199 003</b>	<b>Seal kit and piston rings</b>	<b>1</b>
16 -23	105530	0634 303 118	O-Ring	3
17	501025	0634 306 262	O-Ring	1
18	326578	3306 301 016	Sealing	2
33	501020	0634 301 829	Seal ring output	1
38	215875	0634 301 833	Seal ring input	1
39	254715	3306 301 014	Gasket	3
50	501019	0634 402 174	Piston ring	3
73	500216	3311 301 011	Seal	1
78	501022	0634 306 517	O-ring	5

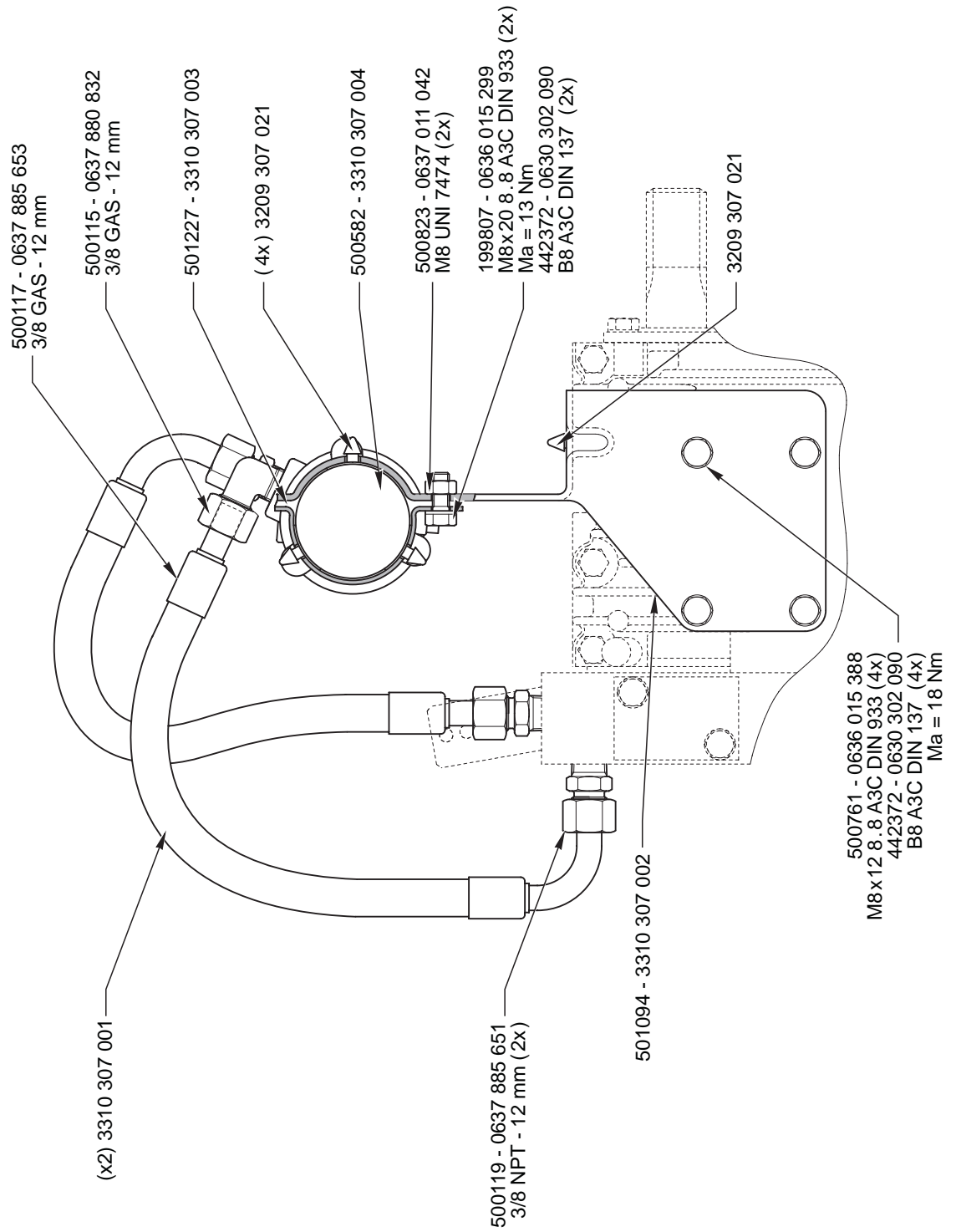
Pos.	Old P/N	New part number	Description	Q.ty
-	<b>501459</b>	<b>3310 199 004</b>	<b>Seal and clutch kit</b>	<b>1</b>
-	501458	3310 199 003	Seal kit and piston rings	1
84	489119	3311 302 006	Outer clutch disc	8
85	489120	3311 302 005	Inner clutch disc	6

Pos.	Old P/N	New part number	Description	Q.ty
-	<b>501457</b>	<b>3310 199 005</b>	<b>Bearing kit</b>	<b>1</b>
27	215878	3306 303 007	Needle bearing	1
35	501378	0635 501 597	Tapered roller bearing	4
43	501065	3310 304 005	Thrust washer	2
45	201187	0635 300 148	Needle cage	4
46	251524	3306 304 021	Inner race	4
52	501064	3310 304 004	Thrust washer	2

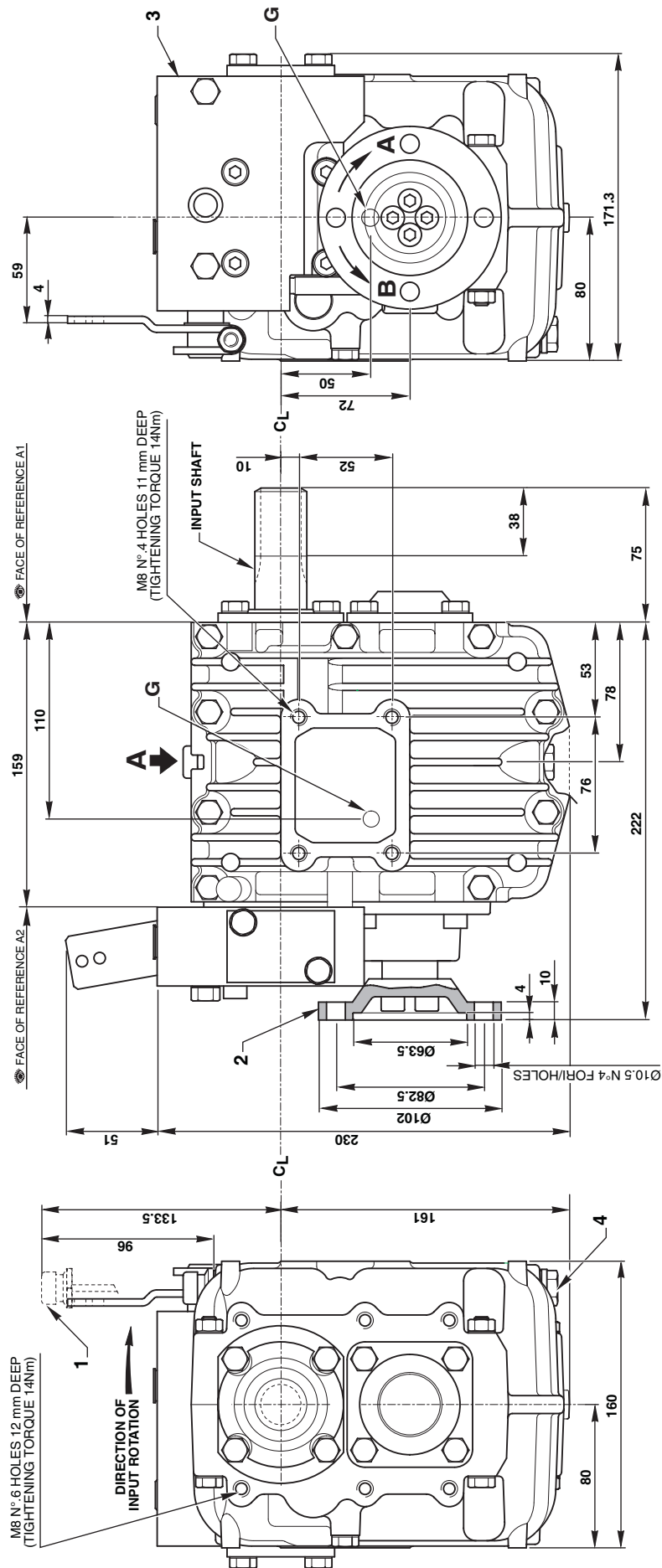




## OIL COOLER KIT P/N 3310 107 001

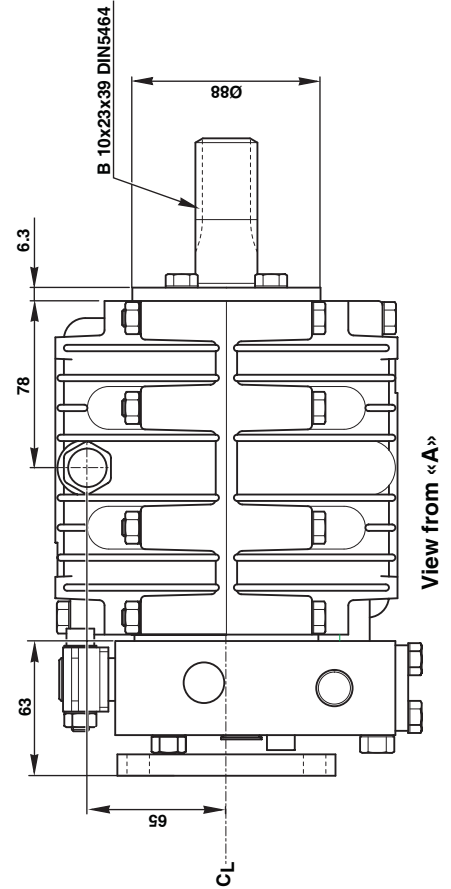


**INSTALLATION DRAWING**



**CL** CENTER LINE INPUT SHAFT

G	
4	CENTER OF GRAVITY
3	OIL DRAIN PLUG
2	MECHANICAL SELECTOR VALVE
1	OUTPUT FLANGE
	OIL BREAKER
	OIL FILLING PLUG
	OIL DIPSTICK



TECHNICAL DATA	
WEIGHT WITHOUT FLUID AND COOLER	28.7 LBS
FLUID CAPACITY WITHOUT OIL COOLER	1.15 QTS
FLUID GRADE	AUTOMATIC TRANSMISSION FLUID



